

PRODUCT INFORMATION
LOCKING SYSTEM MANAGEMENT 3.5 SP1

FEBRUARY 2021



PRODUCT INFORMATION LSM 3.5 SP1

1.0	PRODUCT INFORMATION	3
1.1.	LOCKING SYSTEM MANAGEMENT 3.5 SP1	3
1.2.	PRODUCT SHORT DESCRIPTION.....	4
2.0	PRODUCT ENVIRONMENT	5
2.1.	SYSTEM REQUIREMENTS.....	5
2.2.	NOTES ON INSTALLATION	6
2.3.	DEPENDENCIES	6
2.4.	SUPPORT OF OLDER VERSIONS	6
3.0	RELEASE NOTES.....	7

PRODUCT INFORMATION LSM 3.5 SP1

1.0 PRODUCT INFORMATION

1.1. LOCKING SYSTEM MANAGEMENT 3.5 SP1

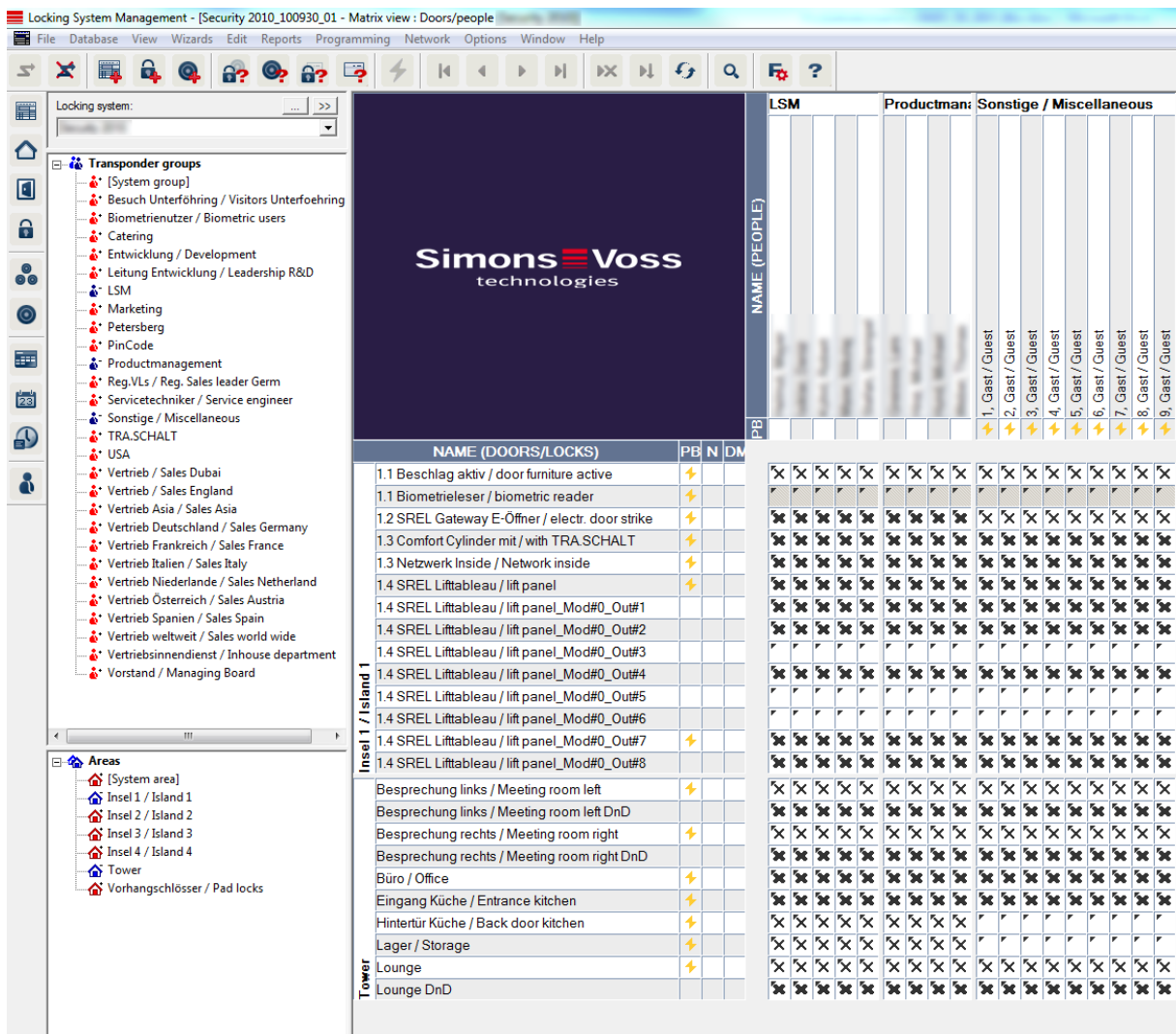


Figure 1- Example installation in LSM 3.5 SP1

PRODUCT INFORMATION LSM 3.5 SP1

1.2. PRODUCT SHORT DESCRIPTION

Version 3.5 SP1 is the consistent further development of the LSM software series. The software supports new hardware components and offers extended functionalities.

The main innovations:

- Support of future AX components
- Readout of the entire locking status incl. battery warning in the network
- Reactions to trigger sensors in event management

The new version also includes improvements that affect stability and operational reliability.

PRODUCT INFORMATION LSM 3.5 SP1

2.0 PRODUCT ENVIRONMENT

2.1. SYSTEM REQUIREMENTS

GENERAL

- Local administrator rights for installation
- Communication: TCP/IP (NetBios active), LAN (recommendation: 100 MBit)
(NetBios may be switched off under certain conditions)
- Windows domain (not necessary for single-user installation)
- Name resolution
- .NET Framework 4.0 Client
- USB interface(s)

CLIENT (ALL EDITIONS)

- Monitor at least 48 cm (19") (or larger for displaying the matrix view) for large systems
Recommendation→
- Screen resolution min. 1024x768, recommended 1280x1024
- Processor: min. 2.66 GHz
- At least 2 GB RAM
- Hard disk size approx. 500 MB (during installation approx. 1 GB), database depends on the amount of processed data (approx. 30 MB)
- MS Windows 10/8.1/8 (Professional), 64 Bit

SERVER (DATABASE SERVER FROM LSM BUSINESS)

- Processor: min. 2.66 GHz
- At least 2 GB RAM
- Hard disk size program approx. 500 MB (during installation approx. 1GB), database depends on the amount of processed data
- MS Windows Server 2019, 2016, 2012(R2)
- .NET Framework when using the CommNodeServer min. 4.0
- Server-based application: a share is required on the ADS server for a database directory
- Virtual environments: VMware VSphere Client version 5.5.0, VMware ESXi version 5.5.0, VMware ESXi version 6.5.0 with Windows Server 2019

IDENTMEDIA

- Active media: SimonsVoss G2 and G1 transponders

PRODUCT INFORMATION LSM 3.5 SP1

- Passive media: MIFARE® DESFire, MIFARE® Classic

2.2. NOTES ON INSTALLATION

LSM 3.5 (SP1) is available as a paid full installation. Users with an older version (3.4 and older) should create a current backup of the database before updating.

An already registered version 3.5 will be updated with Service Pack 1. A new registration is usually not necessary.

After a first installation of version 3.5, however, the software must be unlocked with valid registration information and, if necessary, the backup must be restored. **Note:** As of LSM 3.5, the Basic Edition also requires registration. Please also refer to the Release Notes under point 3.0 before installation.

The installation files are provided in the download section of the SimonsVoss website.

2.3. DEPENDENCIES

The LSM Mobile PC, CommNode Server, VNHost Server, SmartSurveil, SmartXChange and Transponder Terminal software components belonging to LSM are available in versions adapted to LSM 3.5 SP1. The updates of these components must be performed separately.

2.4. SUPPORT FOR OLDER VERSIONS

LSM 3.5 - Standard Support incl. provision of service packs
LSM 3.4 (SP 1&2) - Standard Support incl. provision of service packs
LSM 3.3 (SP1) or older - support discontinued

For all customers with an LSM Business or higher, we recommend the separate support agreement with prioritized support.

PRODUCT INFORMATION LSM 3.5 SP1

3.0 RELEASE NOTES

Changes and bug fixes in SP1 - Overview:

- Correction for "Copy many times" - template for automatic numbering not respected
- Fixed incorrect transponder copy with multiple records and dynamic time window
- Correction when importing door data
- SmartHandle AX - incorrect time zone exception was fixed
- Correction of column label in the "New closure" wizard
- Display of equipment features SmartLocker AX was fixed
- Fixed - Readout with marked unprogrammed closure generates error
- Correction for Temporary Lock function
- Faulty configuration of DM SmartHandle via network task
- Fixed - TransponderTerminal 'Read deactivation log' is not saved
-
- Internal version number 3.5.10130