

PRODUCT INFORMATION
LOCKING SYSTEM MANAGEMENT 3.5

AUGUST 2020



1.0	PRODUCT INFORMATION	3
	1.1. LOCKING SYSTEM MANAGEMENT 3.5	3
	1.2. BRIEF PRODUCT DESCRIPTION.....	4
2.0	PRODUCT ENVIRONMENT	5
	2.1. SYSTEM REQUIREMENTS.....	5
	2.2. NOTES ON INSTALLATION	6
	2.3. DEPENDENCIES	6
3.0	RELEASE NOTES.....	7

PRODUCT INFORMATION
LSM 3.5

1.0 PRODUCT INFORMATION

1.1. LOCKING SYSTEM MANAGEMENT 3.5

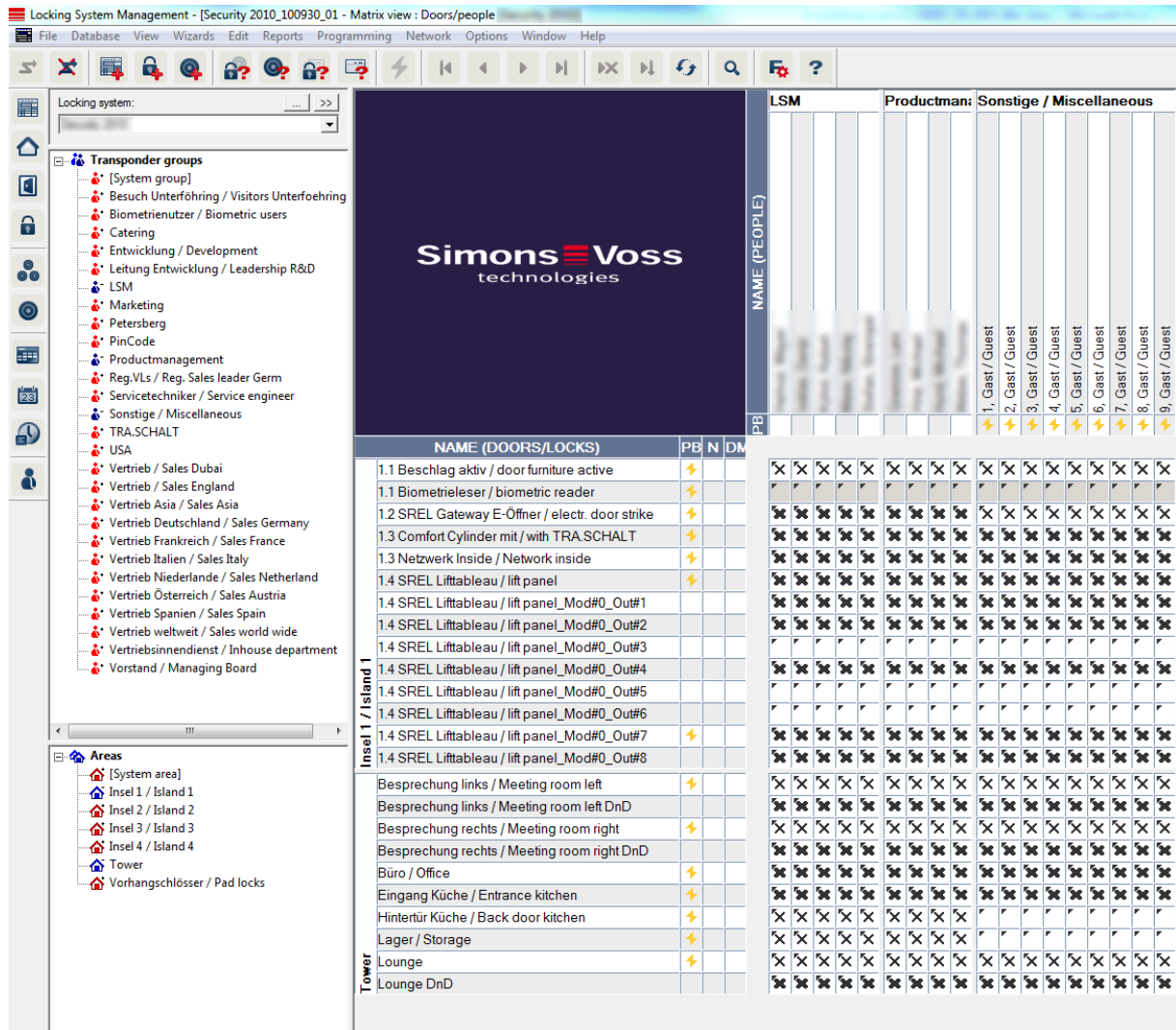


Figure 1 - Example locking system in LSM 3.5

PRODUCT INFORMATION

LSM 3.5

1.2. BRIEF PRODUCT DESCRIPTION

Version 3.5 is the logical further development of the LSM software series. The software supports new hardware components and offers extended functionalities.

The main innovations:

- Repetition interval of tasks in days, weeks and months adjustable
- Global search of transponders and locks also possible by TID or LID
- Support of coming AX components
- Temporary deactivation of a transponder/card (from version 3.5.00431)
- Licensing requirement for LSM Basic Edition
- SmartSurveil
 - Display of inputs from IO router possible
 - Input event "door is locked" can be deactivated
 - Additional status display of inputs
 - Sabotage contact
 - "Door open too long"
- New driver for active programming devices

The new version also contains improvements that affect stability and operational reliability.

2.0 PRODUCT ENVIRONMENT

2.1. SYSTEM REQUIREMENTS

GENERAL

- Local administrator rights for installation
- Communication: TCP/IP (NetBios active), LAN (recommendation: 100 MBit) (NetBios may be switched off under certain conditions)
- Windows domain (not necessary for single user installation)
- Name resolution
- .NET Framework 4.0 Client
- USB interface(s)

CLIENT (ALL EDITIONS)

- Monitor min. 48 cm (19") (or larger for matrix view) for large systems Recommendation→
- Screen resolution min. 1024x768, recommended 1280x1024
- Processor: 2.66 GHz or higher
- 2 GB RAM or higher
- Hard disk size approx. 500 MB (approx. 1 GB during installation), database depends on the amount of processed data (approx. 30 MB)
- MS Windows 10/8.1/8 (Professional), 64 bit

SERVER (DATABASE SERVER FROM LSM BUSINESS)

- Processor: 2.66 GHz or higher
- 2 GB RAM or higher
- Hard disk size program approx. 500 MB (during installation approx. 1GB), database depends on the amount of processed data
- MS Windows Server 2019, 2016, 2012(R2)
- .NET Framework when using the CommNodeServer 4.0 or higher
- Server-based application: a share on the ADS server for a database directory is required
- Virtual environments: VMware VSphere Client version 5.5.0, VMware ESXi version 5.5.0, VMware ESXi version 6.5.0 with Windows Server 2019

IDENTIFICATION MEDIA

- Active media: SimonsVoss G2 and G1 transponders
- Passive media: MIFARE® DESFire, MIFARE® Classic

2.2. NOTES ON INSTALLATION

LSM 3.5 is available as a full installation for a fee. Users with an older version (3.4 and older) should create a backup of the database and uninstall it completely.

After installing the new version, the software must be unlocked with valid registration information and the backup must be restored if necessary. **Note:** From LSM 3.5 onwards, the Basic Edition must also be registered. Please also refer to the Release Notes in section 3.0 before installation.

The installation files are available in the download area of the SimonsVoss website.

2.3. DEPENDENCIES

The LSM software components LSM Mobile PC, CommNode Server, VNHost Server, SmartSurveil, SmartXChange and Transponder Terminal are available in versions that are compatible with LSM 3.5. Updates of these components must be performed separately.

3.0 RELEASE NOTES

Changes and bug fixes - overview:

- General performance improvement
- Troubleshooting with simultaneous use of time switching and time zone control
Note! Can lead to a programming requirement for affected locks during the update
- Correction when adding holidays
- Adaptations for AX locks
- Error correction for multiple copying of transponders
- Troubleshooting for importing persons via CSV file
- Unnecessary programming requirements during the initial setup of a hybrid system
- Error message when moving MP locks to a new locking system
- Error message when programming SREL3 after changing SID and password
- Display error when using character encoding UTF8 in additional texts
- Print view of access lists - missing information from readers
- Corrections when filtering and displaying G1 identification media in the matrix
- Card with two data sets - Reading the time configuration and personal audit trail
- Random UID - Reading the time configuration and walk-through list
- Corrected display for transponder battery warnings
- VNHost - Tasks in several systems with different card configurations
- New driver for active programming devices (version 2.12.28)
- Correction for temporary deactivation
- Internal version number 3.5.00431