

# USB CENTRAL NODE WN.CN.U(X) Installation

Correct in: June 2008

# USB CENTRAL NODE WN.CN.U(X)

## Table of Contents

<b>1.0</b>	<b>COMMISSIONING.</b>	<b>3</b>
1.1	Foreword	3
1.2	Installation of the software	3
1.3	Energy supply for USB central node WN.CN.U(X)	3
1.4	Installation of software driver for USB	4
1.5	Installation of software driver for USB central node	6
<b>2.0</b>	<b>APPENDIX: DEVICE MANAGER.</b>	<b>9</b>
2.1	Settings / changes on the virtual COM port	9
2.2	Energy management for USB	10

**Note:** SimonsVoss Technologies AG reserves the right to make modifications to the product without notice. Consequently, descriptions and representations in this documentation may vary from the most recent product and software versions. As a general principle, the original German version shall apply in the event of any doubt. Subject to errors and misspellings.

## 1.0 COMMISSIONING.

### 1.1 Foreword

Commissioning should be carried out by trained specialists only.

Ensure that

- You have local administrator rights and access to resources / installed components.
- Access to USB ports is enabled.

Depending on your operating system, the views shown in this document may vary from what you actually see.

### 1.2 Installation of the software

System requirements for installation of the software:

- Windows NT SP6a / 2000 SP3, Windows XP SP2
- 20 MB free hard disk space
- 32 MB main memory (recommended: 64 MB)

Two drivers will be installed. The first driver is for the USB port. The second driver is for the SimonsVoss central node.

### 1.3 Energy supply for USB central node WN.CN.U(X)

The USB central node draws its energy from the USB port. No plug-in power supply is therefore required. → 2.2 Energy management for USB.

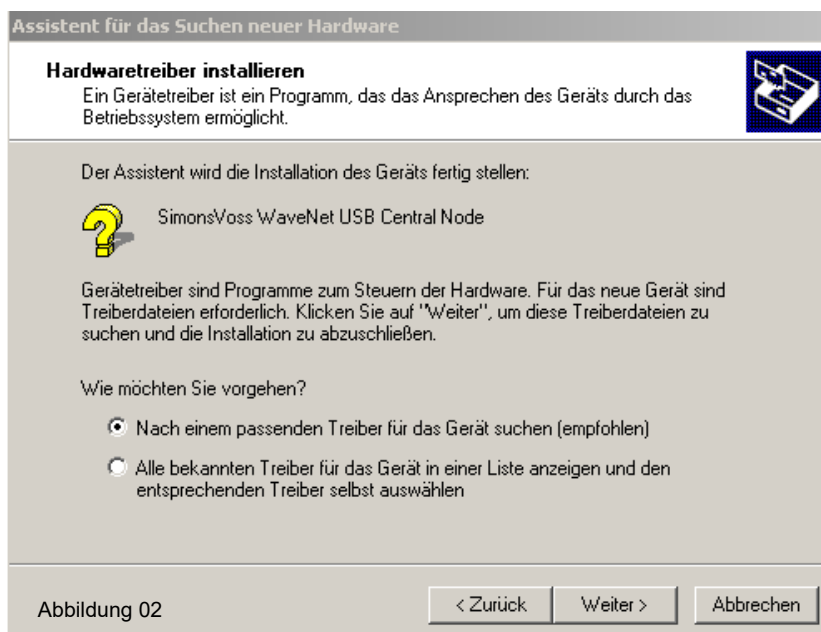
## 1.4 Installation of software driver for USB

Insert the supplied SimonsVoss CD with the USB drivers into your computer's CD drive. Then contact the USB central node (WN.CN.U(X)).

A wizard for the installation of new hardware will guide you through the various menu items. Click "Continue" to proceed.

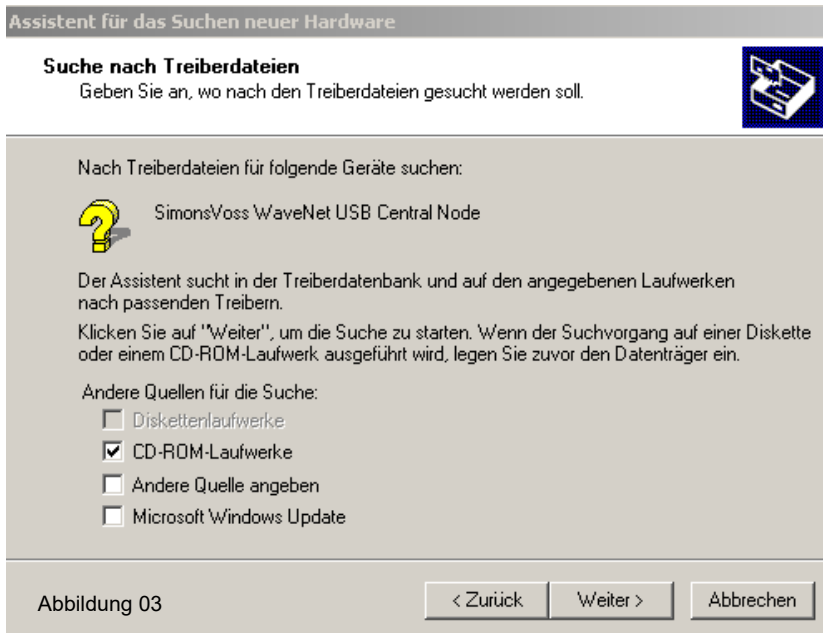


Choose the recommended installation path and click "Continue".

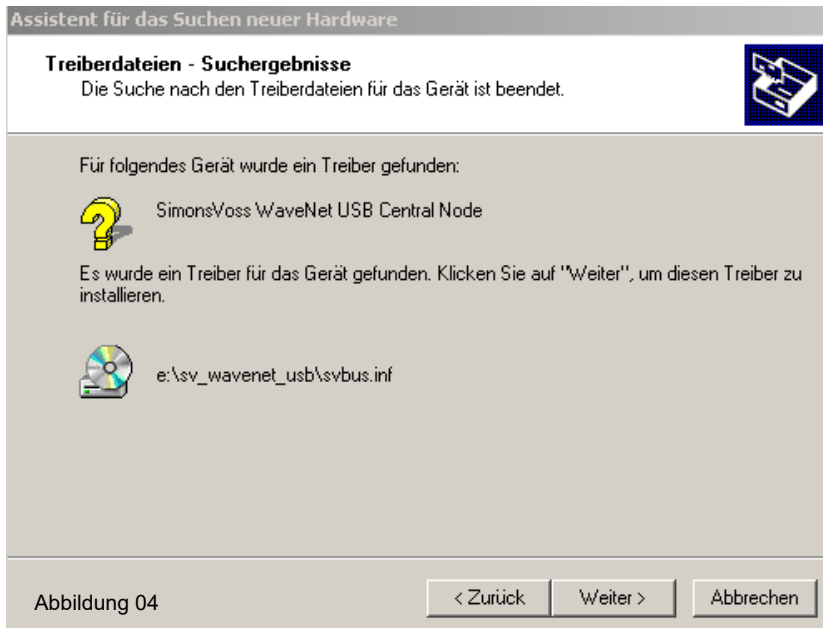


# USB CENTRAL NODE WN.CN.U(X)

Select the option “CD-ROM drives” (a tick appears) and click “Continue”.



The path of the located driver is shown here. The letter identifying the drive, “e:\”, may be different on your computer. Confirm by clicking “Continue”.

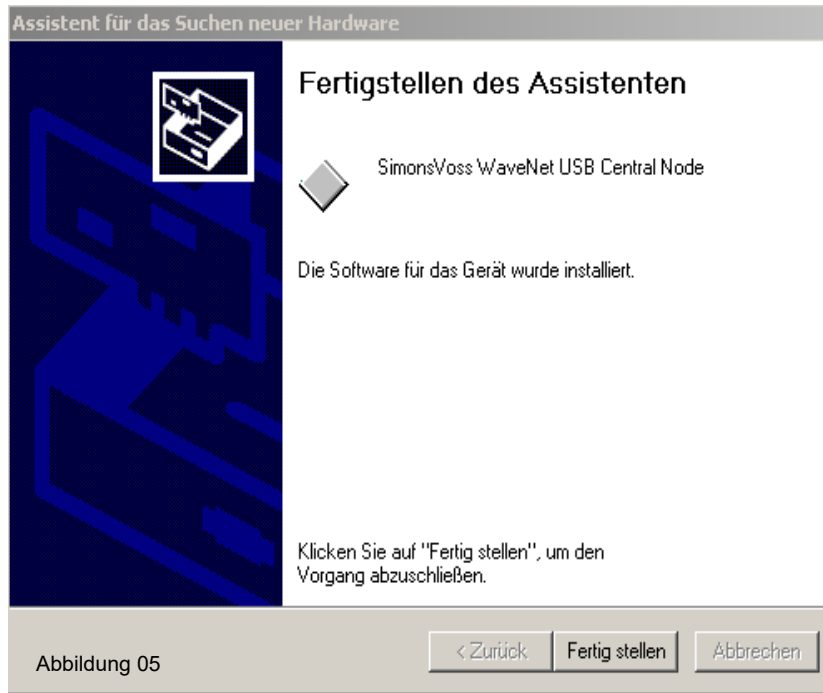


# USB CENTRAL NODE WN.CN.U(X)

Page 6

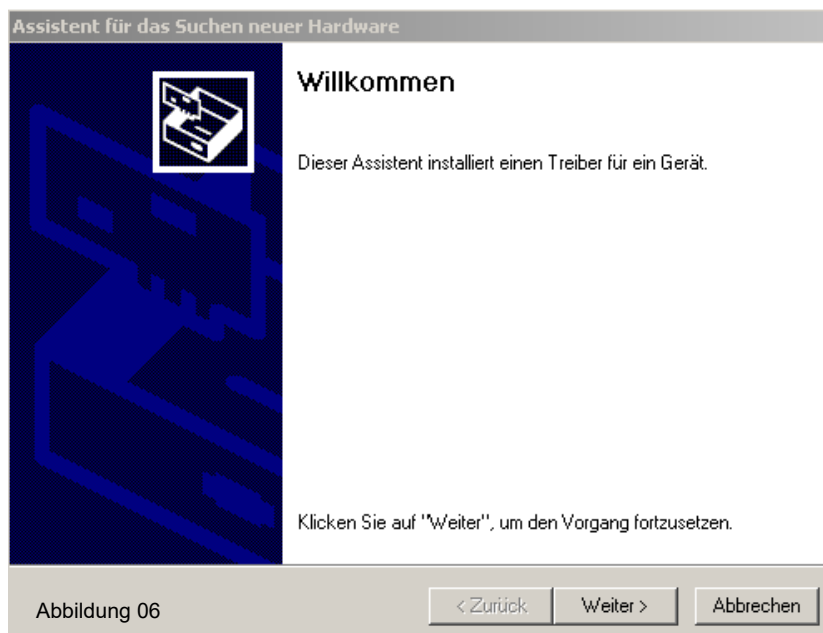
Click "Finish" to complete the installation of the USB driver.

Do not remove the installation CD from the CD drive!



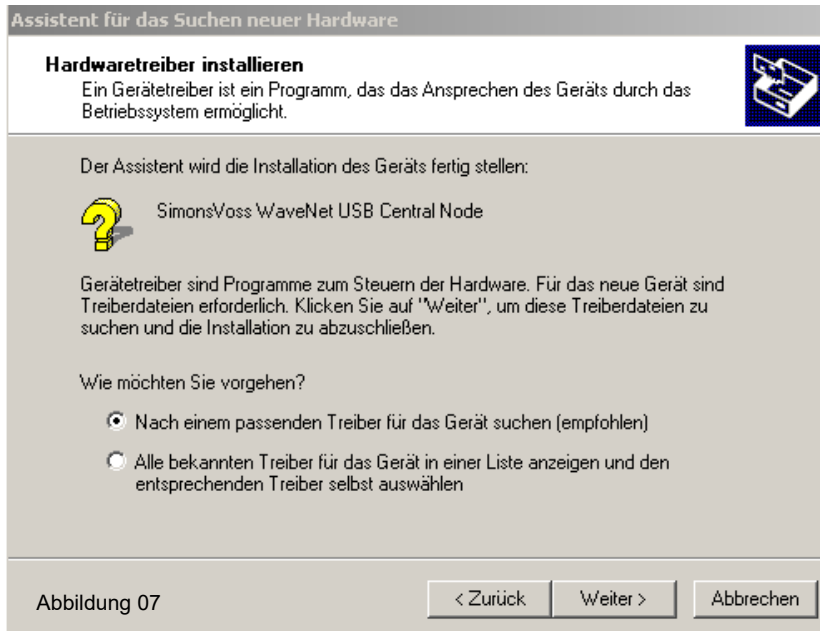
## 1.5 Installation of software driver for USB central node

A wizard for the installation of new hardware will guide you through the various menu items. Click "Continue" to proceed.



# USB CENTRAL NODE WN.CN.U(X)

Choose the recommended installation path and click “Continue”.



Select the option “CD-ROM drives” (a tick appears) and click “Continue”.



# USB CENTRAL NODE WN.CN.U(X)

The path of the located driver is shown here. The letter identifying the drive, "e:\", may be different on your computer. Confirm by clicking "Continue".

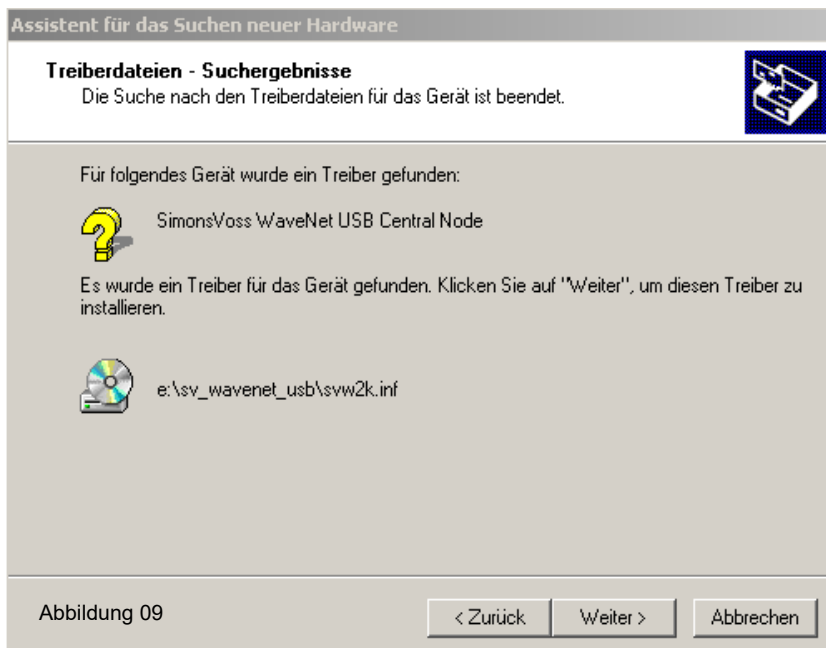


Abbildung 09

Click "Finish" to complete the driver installation for the USB central node.

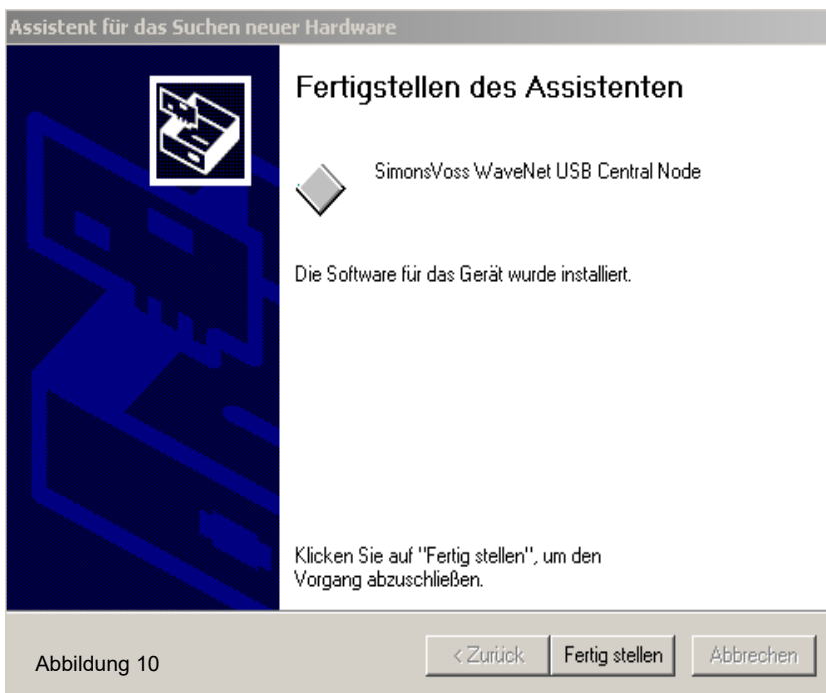


Abbildung 10

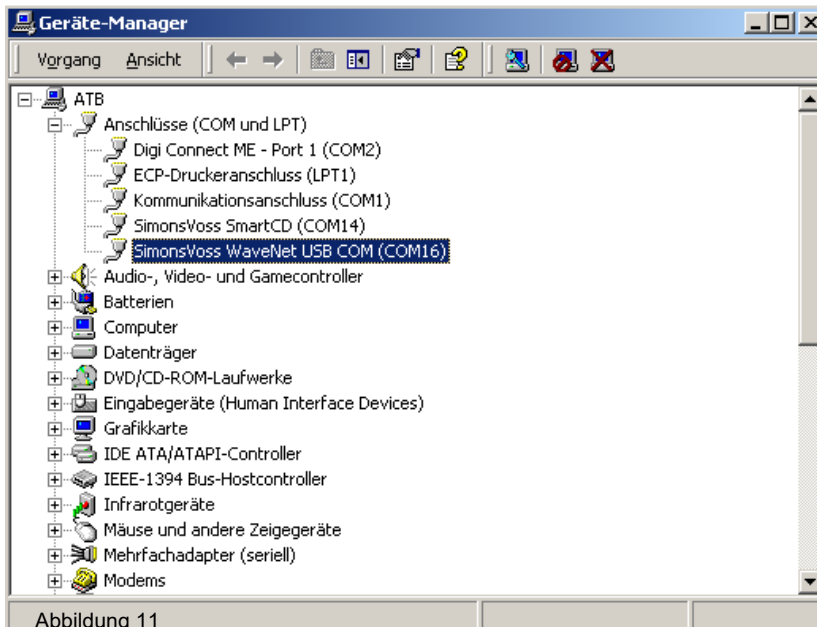


## 2.0 APPENDIX: DEVICE MANAGER.

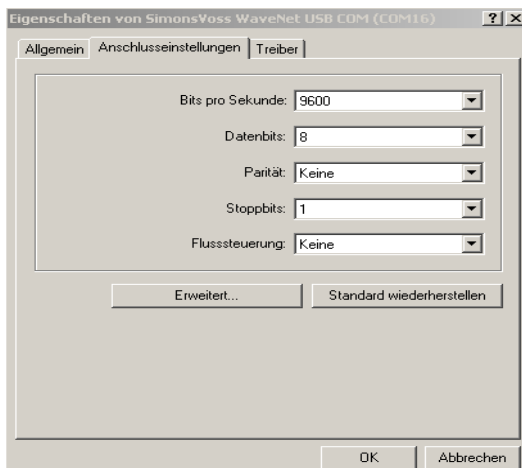
The device manager enables you to make settings / changes in relation to the virtual COM port and energy management of the USB port for the USB central node.

### 2.1 Settings / changes on the virtual COM port

The virtual COM port can be changed under “Connections (COM and LPT)”. Double-click on “SimonsVoss WaveNet USB COM (COM 16)” to view the properties of the port. (COM 16 may vary from that on your computer.)

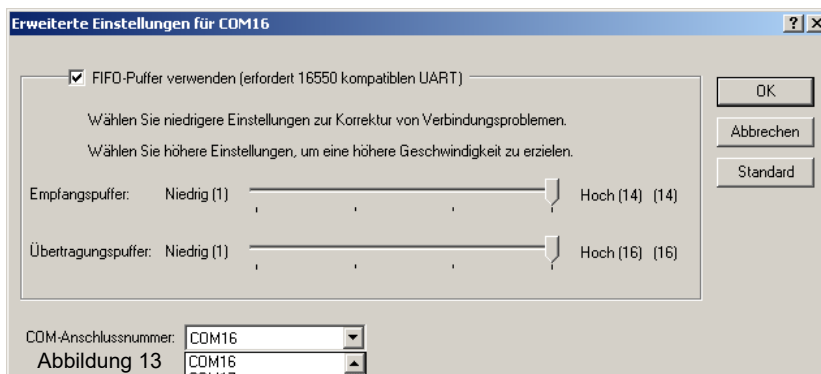


Select “Connection settings” and then “Advanced” to go to the advanced settings for the COM port.



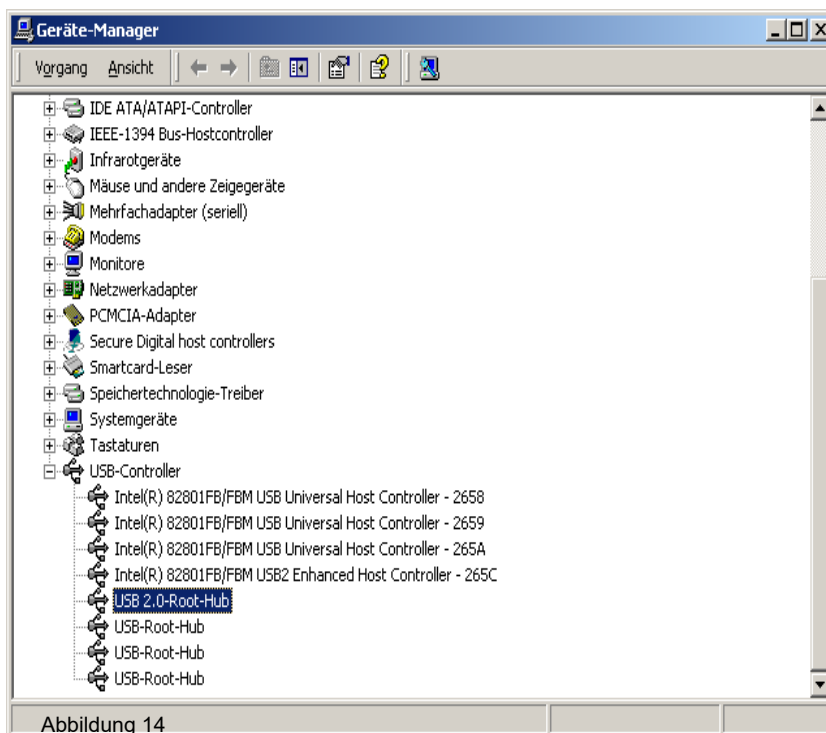
# USB CENTRAL NODE WN.CN.U(X)

A free or preferred COM port can be selected under “COM connection number”. Confirm the changes by clicking “OK”.



## 2.2 Energy management for USB

Under “USB controller” → “Properties of USB 2.0 root hub” you will find energy management for the USB ports available on your PC or laptop.



# USB CENTRAL NODE WN.CN.U(X)

Ensure that a permanent energy supply is available for the WN.CN.U(X). Please check your settings.



SimonsVoss Technologies GmbH  
Feringastr. 4  
85774 Unterföhring  
Germany



This product fulfills essential requirements of CE-Conformity.  
The declaration of conformity can be found at  
[www.simonsvoss.com](http://www.simonsvoss.com)