

MANUAL LSM – UPDATE BASIC

Stand: May 2011

MANUAL LSM – UPDATE BASIC

Table of Contents

1.0	Introduction	4
1.1.	Important note	4
2.0	Understanding this manual	5
2.0	PRINCIPLES OF LSM	6
2.1.	System requirements: LSM 3.1 or higher (Subject to change).....	6
3.0	UPDATING THE SOFTWARE	7
3.1.	General information	7
3.2.	Preparatory steps	7
4.0	Updating Locking System Management BASIC	8
4.1.	General	8
4.1.1	Installing Locking System Management.....	8
4.1.2	Installing Crystal Reports bugfix.....	10
4.2.	Licences and registration	11
4.3.	Updating the existing data and backup.....	14
4.3.1	TRANSFER DATABASE (from version LSM 3.0)	14
4.3.2	IMPORTING A database (ldb).....	14
4.3.3	Backing up and recovering the database (LSM Basic)	16
4.3.4	Updating the CommNode Server.....	17
4.3.5	Restarting services	19
3.0	Service and Support	20
4.0	Glossary	21

MANUAL LSM – UPDATE BASIC

Table of Contents

NOTE:

In the explanations of the various functions of the system, the focus is on operating the software. Please refer to the individual product manuals for descriptions of the individual product features, fittings and functions.

It is important to comply with the product approvals and system requirements when installing and operating the products. SimonsVoss accepts no liability and cannot provide support for installation or operation which deviates from these instructions.

SimonsVoss Technologies AG reserves the right to make modifications to the product without notice. Consequently, descriptions and representations in this documentation may vary from the most recent product and software versions. As a general principle, the original German version shall apply in the event of any doubt. Subject to errors and misspellings.

These documents are based on the current programme status at the time of printing. The information and data they contain may be changed without advance notice and do not represent an obligation on the part of the seller. The software and hardware designations used in this manual are mainly registered trademarks and as such are subject to the legal copyright protection law regulations.

Neither the manual nor extracts of it may be reproduced or disseminated by mechanical or electronic means, photocopying or otherwise without our express written permission. The companies and other pieces of data used in the examples are fictitious, any similarities are therefore purely coincidental.

The editors of this LSM manual took great care when compiling this text. However we cannot guarantee that it is free from errors. The LSM editing team is not liable for technical or printing errors in this manual. The descriptions provided in this manual are not of a guaranteed quality in the eyes of the law.

Please send any corrections or suggestions for improvement to Info@simons-voss.de.

Thank you in advance for your support.

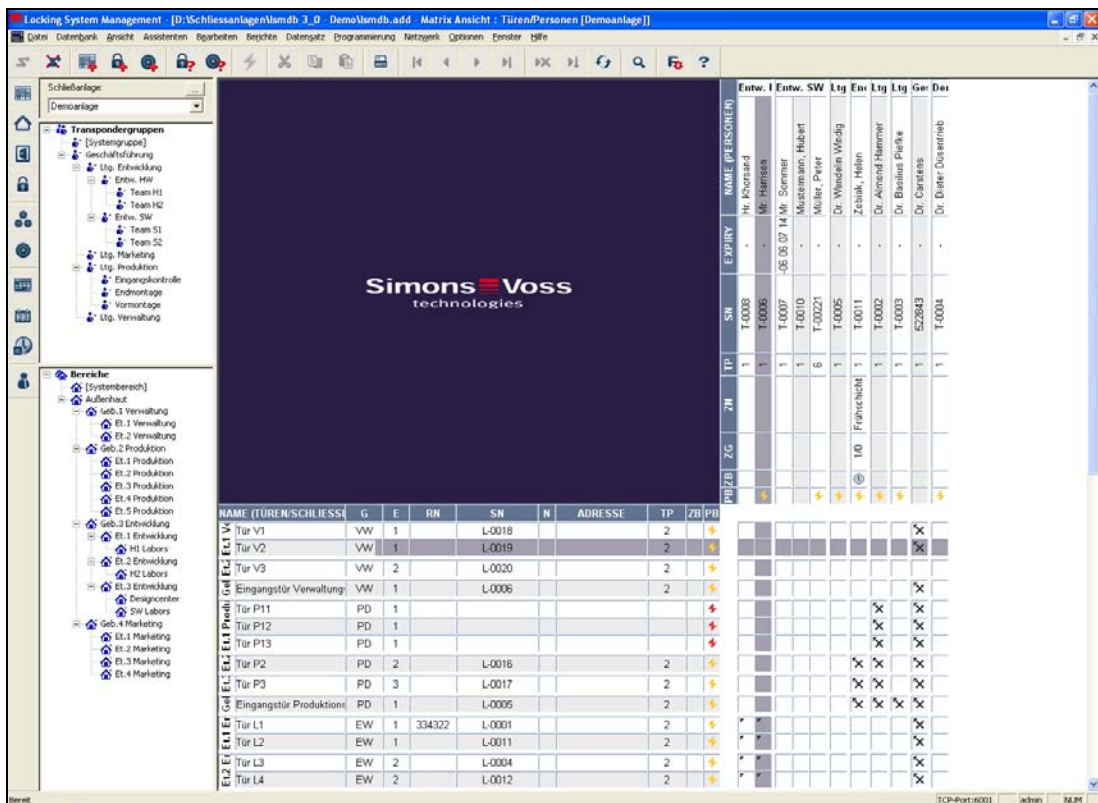
More information about SimonsVoss products can be found online at WWW.SIMONS-VOSS.DE

This manual applies to software without functional limitations. Functions or views in a customer's specific installation may deviate from these due to the software modules activated.

MANUAL LSM – UPDATE BASIC

1.0 INTRODUCTION

Locking System Management (LSM) from SimonsVoss is a database-supported software package that enables you to create, manage and control complex locking plans efficiently. This documentation serves as a guide to help you structure and configure your locking plan. It will also assist you later on when it comes to monitoring and controlling the locking system, making management of **the system** easier.



1.1. IMPORTANT NOTE

SimonsVoss Technologies AG shall assume no liability for damage caused by incorrect assembly or installation.

Access through a door may be denied if components are incorrectly assembled or programmed. SimonsVoss AG shall assume no liability for the consequences of incorrect installation, such as denied access to injured persons or persons at risk, damage to property or any other form of damage.

2.0 UNDERSTANDING THIS MANUAL

➔ MENU ITEMS

The LSM menu items are indicated in this manual by the ➔ symbol.

EXAMPLES

- ➔ Edit
- ➔ Area

HEADINGS AND CHECKBOXES

Headings and checkboxes shown in the screenshots are differentiated by the use of inverted commas.

EXAMPLES

- “User Groups”
- “Areas”

BUTTONS

Buttons shown in the screenshots are highlighted in grey.

EXAMPLES

- OK
- Apply

KEY COMBINATIONS

The key combination you can use to start the required functions is shown in bold.

Ctrl+Shift+X

PATH SPECIFICATIONS

If an instruction refers to a directory on a drive, the path is provided in italics.

EXAMPLE

C:\Program files\SimonsVoss\LockSysGui

NOTE

The specification *[CDROM]* is a variable and describes the letter identifying the drive of the CDROM drive on the computer (e.g. “D”) on which installation is to be carried out.

2.0 PRINCIPLES OF LSM

2.1. SYSTEM REQUIREMENTS: LSM 3.1 OR HIGHER (SUBJECT TO CHANGE)

GENERAL

- Local administrator rights for installation
- Communication: TCP/IP (NetBios active), LAN (recommended: 100 Mbit/s)
- Windows domain
- Name resolution
- .NET Framework 2.0 min., 3.5 recommended
- MS ActiveSync 4.2 in conjunction with a PocketPC
- RS-232 and / or USB interface

CLIENT (LSM BASIC, LSM BUSINESS, LSM PROFESSIONAL)

Minimum hardware requirements

- Monitor min. 19" (48 cm) (or larger for matrix view display)
- Minimum screen resolution: 1024x768, recommended: 1280x1024
- Processor: at least 2.66 GHz (or faster)
- At least 2 GB RAM (or more)
- Hard disk capacity approx. 500 MB (approx. 1 GB during installation), database depends on the volume of data to be processed (approx. 30 MB)
- MS Windows XP Prof. SP3
- MS Windows Vista (Business, Ultimate), 32 or 64 bit
- MS Windows 7 (Professional, Ultimate), 32 or 64 bit

SERVER (DATABASE SERVER: LSM BUSINESS OR HIGHER)

Minimum hardware requirements

- Processor: at least 2.66 GHz (or faster)
- At least 2 GB RAM (or more)
- Hard disk capacity approx. 300 MB (approx. 450 MB during installation), database depends on the volume of data to be processed (approx. 30 MB)
- MS Windows Server 2003
- MS Windows Server 2008
- MS Windows Server 2008 R2
- .NET Framework when using the CommNode Server at least 3.5
- Server-based application: Server-based application: a share is required on the ADS server for a database directory (the share does not require rights)

NOTE

If firewalls are used between the client and server, please refer to chapter IT Network Configuration or contact the LSM technical support team at Firma SimonsVoss Technologies AG.

Please note that it is not permitted to use the software in virtual environments.

3.0 UPDATING THE SOFTWARE

3.1. GENERAL INFORMATION

- The update must be performed on all components at the same time.
- An update to the correct LSM Mobile Edition must also be performed on the Pocket PC used.
- If you wish to update older versions to the current version, please contact your dealer or the relevant LSM hotline.
- Ensure that you have an up-to-date and working data backup to hand.

Note:

Backing up the database is always the responsibility of the customer's IT team. SimonsVoss accepts no liability for missed, incomplete or faulty backups. Please check at regular intervals whether the backups created can also be restored.

3.2. PREPARATORY STEPS

Check the version of your software (launch the software, "blue question mark" icon)

The following versions can be updated:

LDB 1.52b = version 1.52.707.06

LDB 1.53b = version 1.53.707.06

LSM 3.0 SP2 = version 3.0.10040

- Import all Pocket PC or Palm data
- Close all SimonsVoss applications that are currently running
- Shut down the CommNode Server (if installed)
- Backup the current databases
- You need local administrator rights to perform the updates
- Follow the update instructions for your LSM version

4.0 UPDATING LOCKING SYSTEM MANAGEMENT BASIC

4.1. GENERAL

Following the steps below enables you to update your installation to an LSM Basic installation. Technically, you will be updating the LSM GUI and changing the database structure. The Advantage Database Server does not have to be set up because this component is not used in an LSM Basic installation. When upgrading the LDB to LSM Basic, the existing data file (*.ls) must be imported into a new database.

4.1.1 INSTALLING LOCKING SYSTEM MANAGEMENT

PROCEDURE

- Install the software (see the following process)
- Install Crystal Reports bugfix
- Start the software after installation
- Register the software
- Set up the database connection

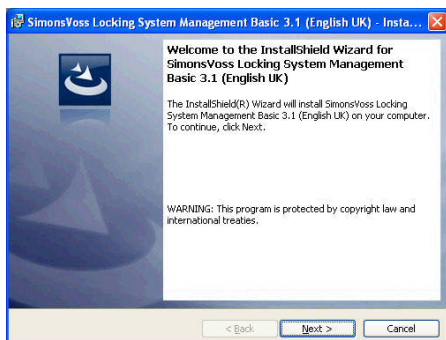
INSTALLING SOFTWARE

- The contents of the software DVD are displayed in the browser when it is inserted
- You will find a direct link to the setup routine in the software area

Alternatively, you can also invoke installation directly

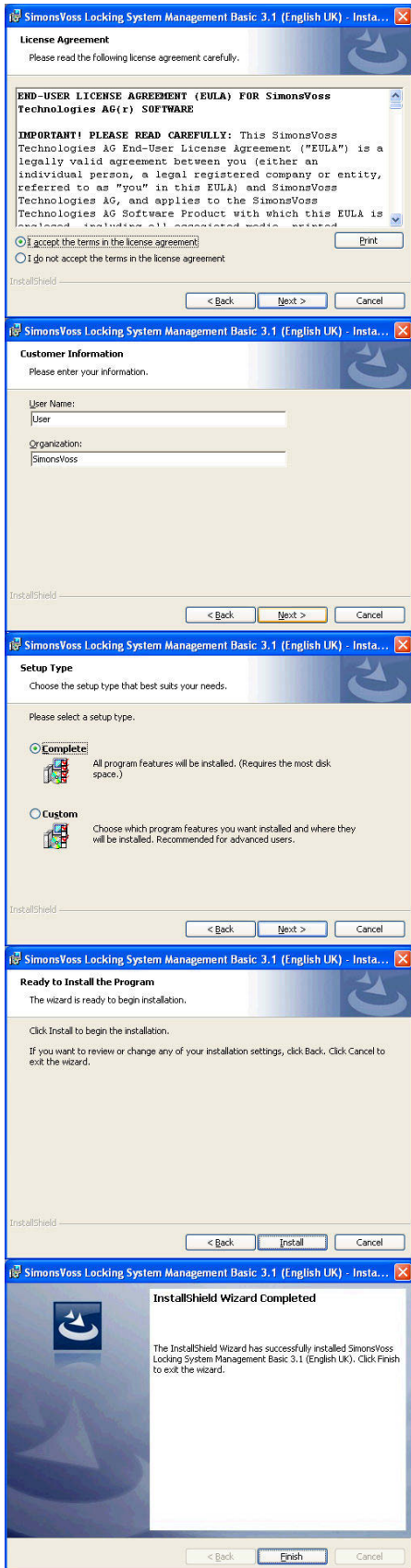
`[CDROM]:\Software\LSM3x_BASIC\[language]\sm_setup_basic_3_x_xx.exe`

- Start installation
- Perform the individual steps



Confirm by clicking on **Next** to start installation

MANUAL LSM – UPDATE BASIC



Read the licence agreement and accept the terms. Then select **Next**.

Enter the user information and then select **Next**.

Confirm by clicking on **Next**.

Confirm by clicking on **Install**.

Confirm by clicking on **Finish** to end the installation.

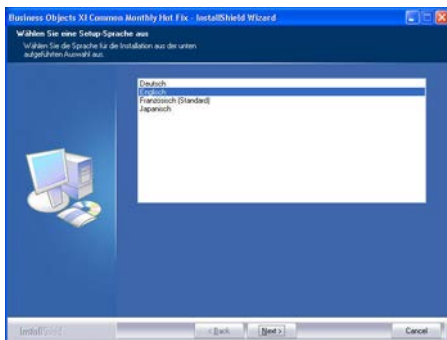
4.1.2 INSTALLING CRYSTAL REPORTS BUGFIX

PROCEDURE

- The contents of the software DVD are displayed in the browser when it is inserted
- You will find a direct link to the setup routine in the software area

Alternatively, you can also invoke installation directly
[CDROM]:\ Software\ LSM3x_BASIC\Crystal_HotFix11\setup.exe

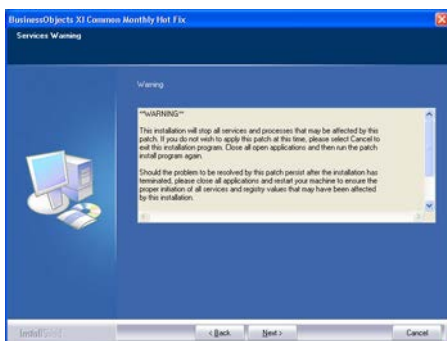
- Start installation
- Perform the individual steps



Confirm by clicking on **Next** to start the installation.

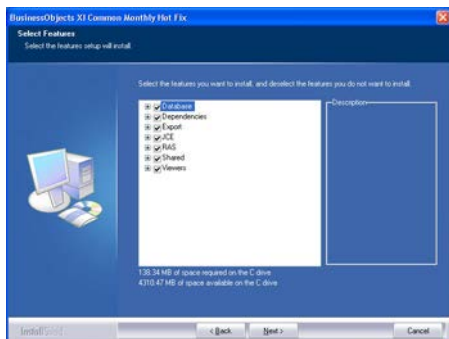


Read the licence agreement and accept the terms. Then select **Yes**.

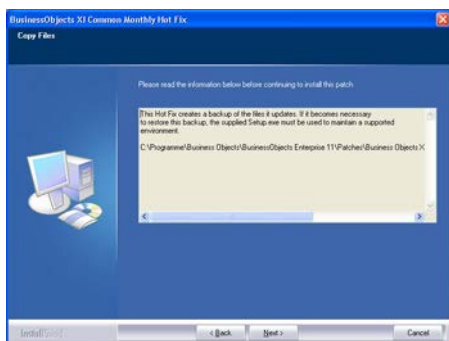


Then select **Next**.

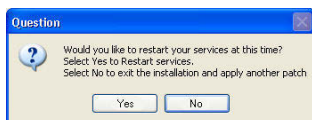
MANUAL LSM – UPDATE BASIC



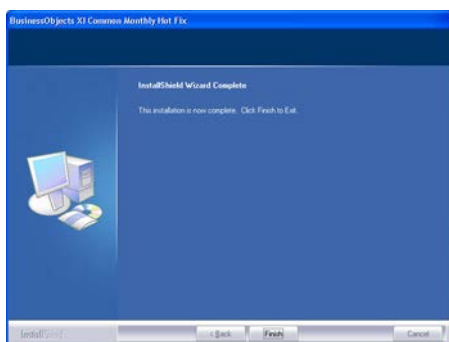
Confirm the complete installation, then select **Next**.



Confirm by clicking on **Next**.



Confirm by clicking on **Yes** to continue the installation.



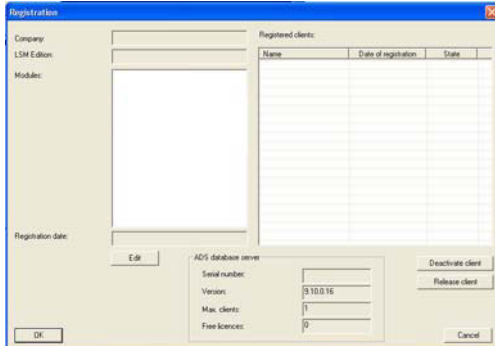
Confirm by clicking on **Finish** to end the installation.

4.2. LICENCES AND REGISTRATION

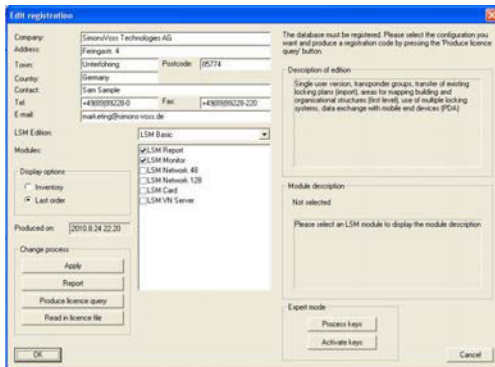
PROCEDURE

- Start the software after installation
- Call up the registration dialogue using the menu item **Help** **Registration**

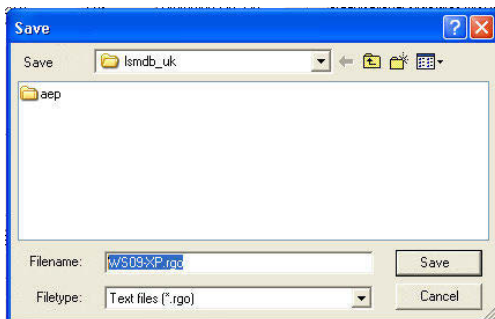
MANUAL LSM – UPDATE BASIC



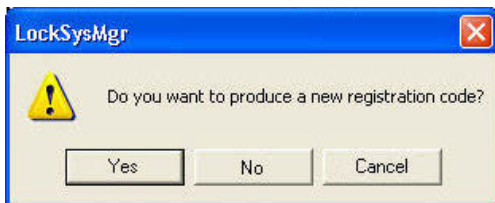
This view provides you with information about the current licensing. **Edit** takes you to the licensing dialogue.



You must enter your customer details here the first time you register. Please select the edition and any modules you have purchased. Create the file with the registration data by clicking on **Create registration code**.



Select a storage location for the registration file.



Please confirm this message if you would like to create a new registration code.

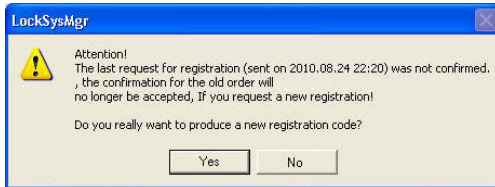
Please forward this file with the name of the dealer relating to your version to the e-mail address below:

LSM Basic Edition:
registration@simons-voss.de

LSM BUSINESS Edition:
lsm-support@simons-voss.de

You receive a licence file from SimonsVoss which you use to activate the software by clicking on **Load licence file**.

MANUAL LSM – UPDATE BASIC



This message appears if you have already requested a registration code which has not yet been activated.



This message appears if you made another request after your registration request, and are now wanting to enter a registration for the first request.

MANUAL LSM – UPDATE BASIC

4.3. UPDATING THE EXISTING DATA AND BACKUP

4.3.1 TRANSFER DATABASE (FROM VERSION LSM 3.0)

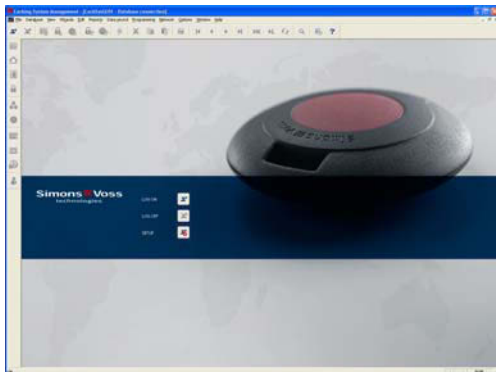
When logging into a database that originated with version 3.0 it will be automatically adapted to the new database schema and can then be used with version 3.1.

Note:

It will then not be possible to open the database with an older version.

4.3.2 IMPORTING A DATABASE (LDB)

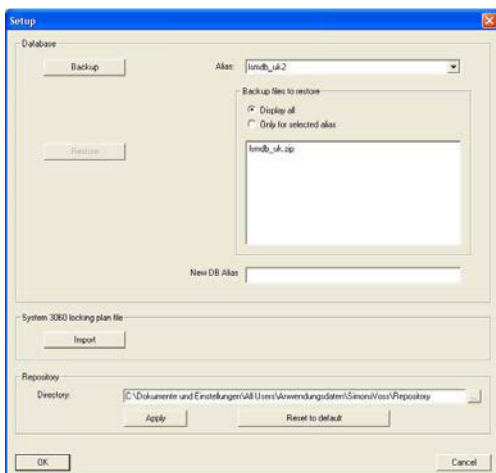
PROCEDURE



Start the software. In the LSM start window, please select **Setup** to configure the database connection.



Select **Advanced**.



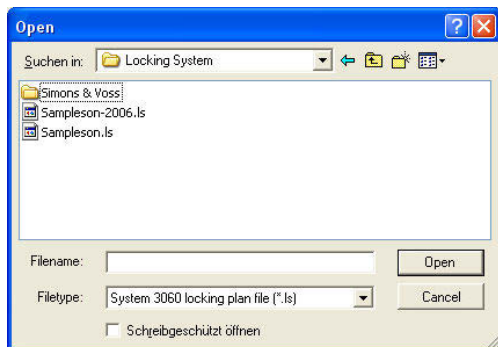
Select **Import**.

MANUAL LSM – UPDATE BASIC

Page 15



Enter a new alias for the database. This database is specified as the default by clicking on the **Apply as default** button.



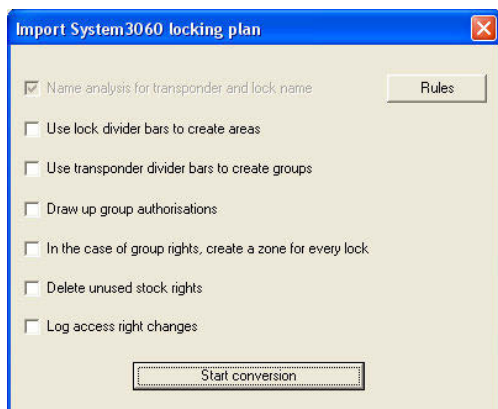
Select the backup copy of your LDB locking plan file and confirm this with **Open**.



Enter the file password.

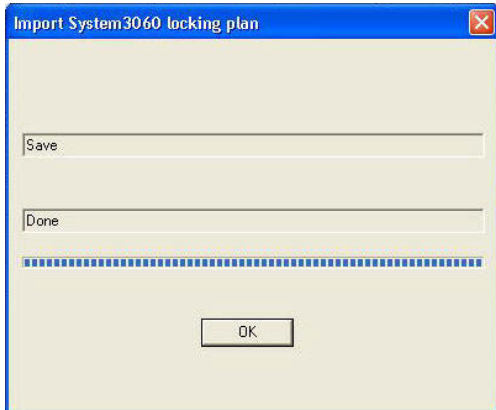


Enter the locking system password.

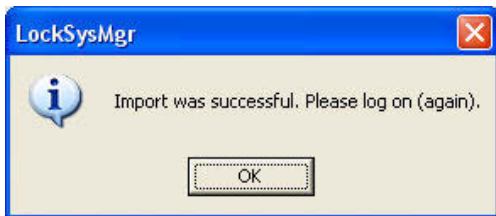


Select the import variants you want. Confirm with **Start conversion**. The selection may vary depending on the data available. It is therefore worth considering performing several test imports first, then performing the import with the relevant settings.

MANUAL LSM – UPDATE BASIC



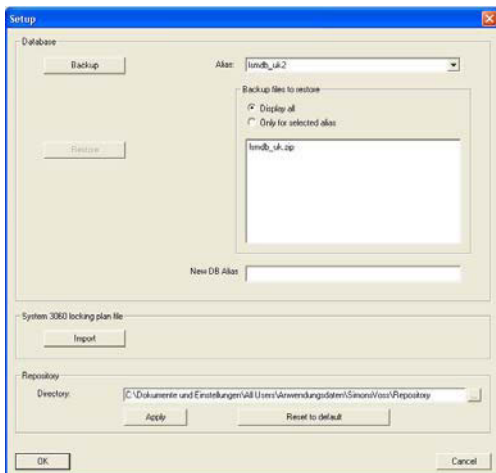
Following successful conversion, please confirm with **OK**.



Please confirm with **OK** and log on to the new database.

4.3.3 BACKING UP AND RECOVERING THE DATABASE (LSM BASIC)

PROCEDURE



Calling up the advanced setup by clicking on **Advanced** allows you to specify the local storage location for the database. Data backups are stored here too. Backups can be created by clicking on the **Backup** button and restored by clicking on **Recover**.

4.3.4 UPDATING THE COMMNODE SERVER

PROCEDURE

- Left-click the Windows Start button
- Select the Run menu item
- Enter and confirm the command
[CDROM]:\Software\LSM3x_BASIC\[language]\commnode_setup_3_x_xx.exe
in the “Open” dialogue field
- Follow the instructions
- Following successful installation, the file “install_CommNodeSvr.bat” must be run from the installation folder *C:\Programs\SimonsVoss\CommNodeSvr_3_x.*
- Enter and confirm the command *services.msc* in the “Open” dialogue field
- Right-click on “SimonsVoss CommNode Server”, “Properties”
- Check whether the “SimonsVoss CommNode Server” service has been launched

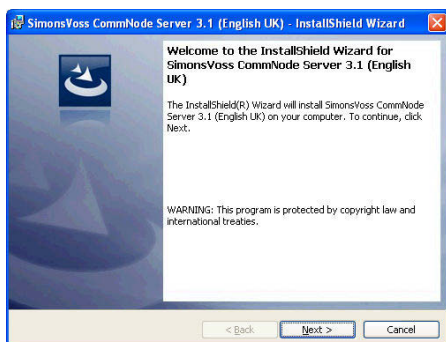
INSTALLING SOFTWARE

- The contents of the software DVD are displayed in the browser when it is inserted
- You will find a direct link to the setup routine in the software area

Alternatively, you can also invoke installation directly

[CDROM]:\Software\LSM3x_BASIC\[language]\commnode_setup_3_x_xx.exe

- Start installation
- Perform the individual steps

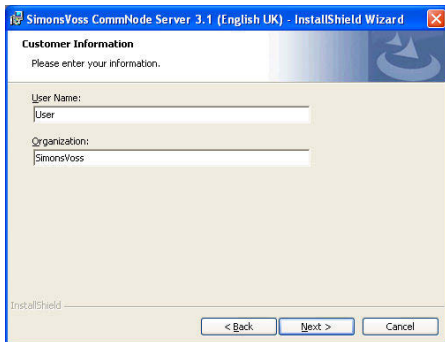


Confirm by clicking on **Next** to start installation

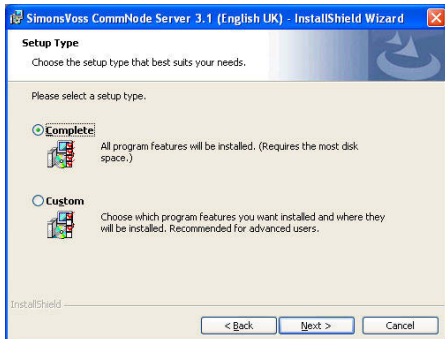
MANUAL LSM – UPDATE BASIC



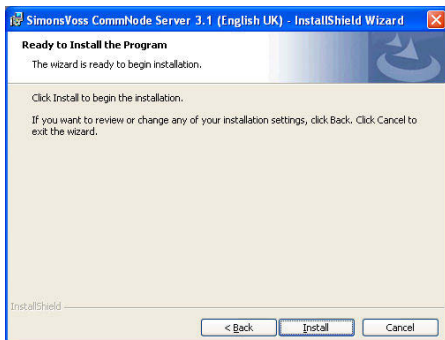
Read the licence agreement and accept the terms. Then select **Next**.



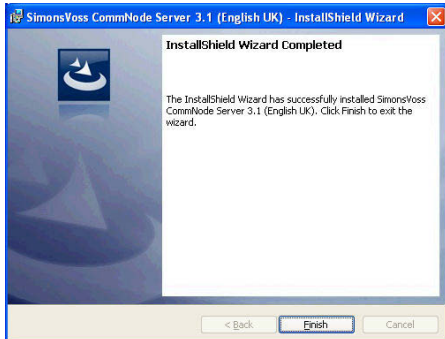
Enter the user information and then select **Next**.



Confirm by clicking on **Next**.



Confirm by clicking on **Install**.



Confirm by clicking on **Finish** to end the installation.

4.3.5 RESTARTING SERVICES

PROCEDURE

START → SYSTEM CONTROL → MANAGEMENT → SERVICES

- Start the “SimonsVoss CommNode Server” service

3.0 SERVICE AND SUPPORT

PRODUCT SUPPORT

If customers have any questions relating to products from SimonsVoss Technologies AG, the general support team will be happy to help:

Telephone +49 (0) 1805 78 3060

The product hotline does not offer support for the LSM Business and Professional software.

Software support

Support Standard

For customers with a chargeable Support Standard software agreement, the following support options are also available:

E-MAIL LSM-SUPPORT@SIMONS-VOSS.DE

TELEPHONE +49 (0) 1805 57 3060

Support Premium

For customers with a chargeable Support Premium software agreement, the following support options are also available:

E-mail lsm-support@simons-voss.de

Telephone +49 (0) 1805 57 3060

Online support tool

Short call to LSM hotline

Launch LSM

➔ areas,

➔ **SIMONSSVOSS ONLINE SUPPORT**

4.0 GLOSSARY

This list is not exhaustive.

A

Access lists

Storage of transponder data in the locks with access control function. Please note the valid health and safety and data protection regulations when using this data.

Alerts

You can use alerts to promptly display certain statuses.

Area

The area is a combination of several doors.

Audit-compliant

A log is described as audit-compliant if the information about changes in a system in the database is archived such that it can be found again and traced, cannot be changed and is protected from falsification.

C

Checkbox

Option of selecting a property in the graphic interface

D

Database-supported

Software that stores data in a specified structure, the database. The locking system database includes the locking plan and the locking systems.

Door

You have the option of saving additional information on the door, which also manages the locks.

E

Emergency opening

Procedure for opening a lock without an authorised transponder. Emergency opening is protected by passwords.

Event

An event is a change in status reported to LSM via the network.

Export

During the export process, the selected locking plan data is transferred to the PocketPC.

F

Filter

A filter limits the view to data grouped / sorted by the selected property

G

Group authorisation

Group authorisations provide the option of authorising several transponders to several locks at the same time.

GUI

Graphical User Interface for operating the software.

H

Handheld

A handheld / PocketPC is a small computer that can be used for mobile programming.

Hierarchy

Hierarchy is a system of elements that are superordinate or subordinate to one another.

I

Import

During the import process the exported locks are transferred back to the locking system after processing.

L

Lock

Lock can be understood as meaning SimonsVoss products that evaluate an authorisation and enable opening.

Locking plan

The locking plan contains all the authorisation and system information, user management and may include several locking systems.

Locking system

The locking system structures the created transponders and doors and manages access authorisations.

LON

LON is a wired communication system for building automation. SimonsVoss components can network technology and products that meet this standard and therefore be operated online

LSM Mobile

Software for a handheld / PocketPC for mobile management and programming of the locking system.

M

Matrix

The matrix is the graphical view of authorisations in LSM.

N

Network

The SimonsVoss network enables the locks to be directly addressed without the programming device.

Network address

The network address allows you to clearly recognise each lock node, which is fitted on the door and stored in the software as being assigned to the door.

O

OMRON mode

All product versions can be operated in OMRON mode. If you would like the Smart Relay to transfer the transponder data to an external system and a remote opening command to be sent to the cylinder when transfer is activated from the Smart Relay by the external system, select this option on both the Smart Relay and the cylinder. Please note: If you use this configuration, it is no longer possible to open the cylinder using the transponder! Please refer to the Smart Relay Manual for an exact description.

Overlay mode

In overlay mode 8 transponder IDs are reserved for a created transponder and programmed into the authorised locks. If the first transponder is lost, the transponder ID is deactivated in the software and the new transponder is assigned the next transponder ID from the reserve TIDs. When the transponder is used to open a lock, the system recognises that this is one of the 7 reserve TIDs and deactivates the previous transponder ID.

P

Password

The security of passwords depends on the complexity and length of the password. Passwords are used to protect the locking system in several parts of the system

Period of validity

The period of validity is a time frame in which the transponder will function. The transponder is deactivated outside this time frame.

Person

Person allows you to store additional information about a user.

PocketPC

A handheld / PocketPC is a small computer that can be used for mobile programming of locks.

Programming requirement

Programming is required if there is a difference between the actual and target status, either due to a change in access authorisations or configurations.

Public holiday

National or company-specific holiday or period of several days off.

Public holiday list

A public holiday list is a compilation of selected public holidays and is used in the time zone plans.

R

Reserve

A reserve shows the number of G1 transponder IDs in the selected transponder group.

Reset

During the reset process the data on the object is deleted and the actual status of the software set to “unprogrammed”

S

Search

Search enables you to jump directly to an object in the locking system or database

T

Task list

List of tasks available in the system

Time group

A transponder can be assigned to a time group and when used in conjunction with a time zone plan, creates time-controlled access.

Time group name

Time group name is the pre-defined time group name assigned to the time group number of a transponder

Time group number

The time group number of a transponder can be set individually and is specified by the administrator. The transponder is approved or rejected in a lock time zone plan according to this group.

Time zone

Time zones are areas that can only be accessed by certain transponder groups at certain times.

Time zone plan

Object for time-controlled access on locks for areas and transponders. Public holiday lists can also be incorporated here.

Transponder

The transponder is the “electronic key” in the system 3060.

Transponder group

The transponder groups is a combination of several transponders for managing group rights.

W

WaveNet

WaveNet is an extremely flexible SimonsVoss network that can use both wired and wireless connections.

Write access

The right to make changes. Certain roles in LSM user management, such as using handheld devices, managing a network or configuring a network, require write access in the database before they can be performed.