

PRODUCT INFORMATION
LOCKING SYSTEM MANAGEMENT 3.3

BASIC
BASIC ONLINE
BUSINESS
PROFESSIONAL

STATUS: FEBRUARY 2016

PRODUCT INFORMATION
LSM 3.3 Basic, Basic Online, Business, Professional

1.0	PRODUCT INFORMATION	3
1.1.	LOCKING SYSTEM MANAGEMENT 3.3	3
1.2.	SHORT PRODUCT DESCRIPTION	4
2.0	PRODUCT ENVIRONMENT	5
2.1.	SYSTEM REQUIREMENTS	5
2.2.	REGISTRATION	6
2.3.	DEPENDENCIES	6
3.0	TECHNICAL SPECIFICATIONS	7
4.0	RELEASE NOTES AND REMARKS	8
4.1.	NEWS LSM 3.3	8
4.2.	IMPORTANT REMARK	8

PRODUCT INFORMATION
 LSM 3.3 Basic, Basic Online, Business, Professional

1.0 PRODUCT INFORMATION

1.1. LOCKING SYSTEM MANAGEMENT 3.3

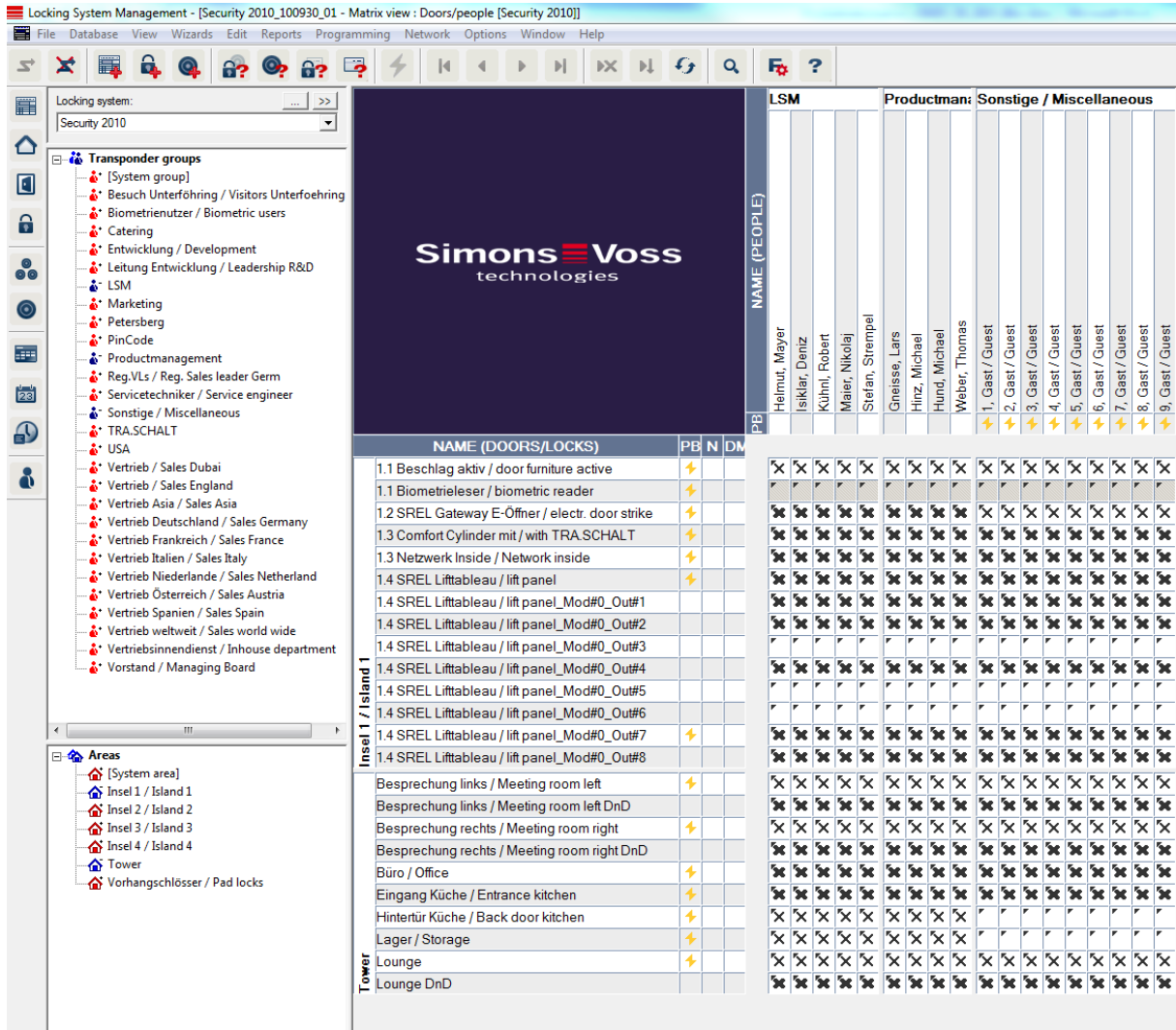


Figure 1 - Example system in LSM 3.3

PRODUCT INFORMATION
LSM 3.3 Basic, Basic Online, Business, Professional

1.2. SHORT PRODUCT DESCRIPTION

Version 3.3 of the LSM software series further enhances SimonsVoss locking device and locking system management products and components.

Developments in door monitoring, card technology, ID media, programming devices and multi-network components require new software functions.

Fundamental new features:

- Support of the new SmartHandle Door Monitoring / Hybrid
- Simple Event Management in LSM Basic
- Battery warnings from the locking devices are transmitted to the transponders

Improvements in terms of stability and operational reliability have been made and further functions have been implemented in the application software.

LSM-Starter 3.3 will be made available in a separate product information.



Figure 2 – Smart Handle 3062

2.0 PRODUCT ENVIRONMENT

2.1. SYSTEM REQUIREMENTS

- Local administrator rights for installation
- Communication: TCP/IP (NetBios active), LAN (recommended: 100 MBit) (NetBios may be disabled under certain conditions)
- Windows domains (not required for single workstation installations)
- Name resolution
- .NET Framework min. 2.0 for LSM, and 3.5 for CommNodeServer (CNS)
- Windows Mobile Center 6.1 in conjunction with a pocket PC / PDA
- USB port(s):

CLIENT (LSM STARTER, LSM BASIC, LSM BUSINESS, LSM PROFESSIONAL)

- Monitor at least 48 cm (19") (or larger for displaying the matrix screen) for large systems →
- Screen resolution at least 1,024 x 768; recommended: 1,280 x 1,024
- Processor: min. 2.66 GHz (or faster)
- Min. 2 GB RAM (or more)
- Hard disk size: about 500 MB (about 1 GB during installation); database depends on the scope of the processed data (about 30 MB)
- MS Windows Vista (Business, Ultimate), 32 or 64 bit
- MS Windows 7 (Professional, Ultimate), 32 or 64 bit
- MS Windows 8/8.1 (Professional), 32 or 64 bit
- MS Windows 10 (Professional) 64 bit
- LSM Starter Windows 10 Home 64 bit

SERVER (DATABASE SERVER WITH LSM BUSINESS AND HIGHER)

- Processor: min. 2.66 GHz (or faster)
- Min. 2 GB RAM (or more)
- Hard disk size for program: about 500 MB (about 1GB during installation); database depends on the scope of the processed data
- MS Windows Server 2003, 2008, 2008 R2 or 2012
- .NET Framework at least 3.5 when using the CommNode server
- Server-based application: approval is required for a database directory on the ADS server (approval does not require any rights)

PRODUCT INFORMATION
LSM 3.3 Basic, Basic Online, Business, Professional

2.2. REGISTRATION

With LSM **3.3** all modules **must** be registered in LSM **anew**. Please consider that the different editions contain different modules.

2.3. DEPENDENCIES

All LSM software components such as LSM Mobile PC, LSM Mobile PDA, CommNode Server, CommNode Agent, VN administration program, SIK and similar are available in versions which are aligned with LSM 3.3. Installation must be started separately for some of these components.

3.0 TECHNICAL SPECIFICATIONS

Technical specifications

Supported operating systems	Windows Vista, Windows 7 and Windows 8/8.1, Windows 10 (we recommend using the Professional versions) Installation in virtual environments (Microsoft HyperV, VMware VSphere Client Version 5.1.0, VMware ESXi Version 5.1.0 approved).
Integrated database	Advantage Database Server (ADS 11)
Active media	SimonsVoss G1 and G2 transponders
Passive media	MIFARE Classic, MIFARE DESFire and MIFARE Plus technology, certain NFC phones
Upgrade	An upgrade to higher LSM editions is possible; any projects already created remain valid

4.0 RELEASE NOTES AND REMARKS

4.1. NEWS LSM 3.3

SUMMARY

- New components
 - SMARTHANDLE.DM / SMARTHANDLE - HYBRID
- Simple event management in LSM 3.3 Basic Online
With the simple event management solution, door monitoring events (door opened / door closed, etc.) can be written into a text file (.txt) by the locking cylinder.DM or SmartHandle.DM. This makes it possible to provide various status messages per door to a third-party provider e.g. for visualization software. This third-party provider may then make use of the status messages for their purposes.
- Battery warnings from the locking devices are transmitted to the transponders. They can either be exported or transferred in VN or while programming the transponder with the programming device (only for new locking systems)
- Database optimisation → quicker loading of the "view"
- Design-optimized User Interface
 - Various settings that have been saved in the ini file are now saved in the database.
This way, every user can load their GUI settings to any computer
 - Menu items have been better positioned and grouped.
 - After opening the database the following functions are available
 1. Create a new locking system
 2. Import an LDB file
 3. Import a CSV file
- The selection that you make will determine the view that you are shown
- The matrix view can be exported in a CSV file
- New driver concept
- Encryption of communication with the database server is enabled by default
- New version of the ADS server 11.10.0.22 has to be installed

4.2. IMPORTANT REMARK

- LSM 3.3 may only be installed as a single LSM version. Parallel/test operation with an older version, e.g. 3.2 SP2 may not take place!