



LSM Mobile

Manual

08.08.2022

Contents

1	General	3
1.1	General safety instructions.....	3
1.2	Legal notes.....	4
2	System requirements	5
3	Intended use	7
4	Installing LSM Mobile	8
5	Preparation: Exporting the database from LSM to LSM Mobile	13
6	Exported tasks	21
7	Opening the database	22
8	Carrying out work with LSM Mobile	24
8.1	Reading locking device.....	24
8.2	Programming the locking device.....	25
8.2.1	Programming the locking device next to the programming device.....	25
8.2.2	Programming a specific locking device.....	27
8.3	Replacing the programming device.....	30
8.4	Staying logged on.....	32
9	Post-editing: Data reimport	34
10	Description of the settings	38
11	Help and other information	40

1 General

1.1 General safety instructions

Signal word (ANSI Z535.6)	Possible immediate effects of non-compliance
DANGER	Death or serious injury (likely)
WARNING	Death or serious injury (possible, but unlikely)
CAUTION	Minor injury
IMPORTANT	Property damage or malfunction
NOTE	Low or none

Signal words (ANSI Z535.6)

DANGER: Death or serious injury (likely), WARNING: Death or serious injury (possible, but unlikely), CAUTION: Minor injury, IMPORTANT: Property damage or malfunction, NOTE: Low or no damage



WARNING

Blocked access

Access through a door may stay blocked due to incorrectly fitted and/or incorrectly programmed components. SimonsVoss Technologies GmbH is not liable for the consequences of blocked access such as access to injured or endangered persons, material damage or other damage!

Blocked access through manipulation of the product

If you change the product on your own, malfunctions can occur and access through a door can be blocked.

- Modify the product only when needed and only in the manner described in the documentation.



NOTE

Intended use

SimonsVoss-products are designed exclusively for opening and closing doors and similar objects.

- Do not use SimonsVoss products for any other purposes.

Qualifications required

The installation and commissioning requires specialized knowledge.

- Only trained personnel may install and commission the product.

Modifications or further technical developments cannot be excluded and may be implemented without notice.

The German language version is the original instruction manual. Other languages (drafting in the contract language) are translations of the original instructions.

Read and follow all installation, installation, and commissioning instructions. Pass these instructions and any maintenance instructions to the user.

1.2 Legal notes

The purchaser is expressly informed that use of the locking system (e.g. with access event logging and DoorMonitoring functions) may be subject to statutory permit requirements and employee rights to co-determination, especially with regard to data protection legislation. The purchaser or customer and the end user are responsible for ensuring that the product is used in compliance with the law.

Malfunctions may arise if the product is not used as agreed or is used in a non-standard way. They may also occur if the product undergoes repairs or modifications not expressly approved by SimonsVoss Technologies GmbH, or assistance with the product is obtained from a non-specialist service provider; do not use the product or have it repaired or serviced in this way. Any modifications not expressly permitted by SimonsVoss Technologies GmbH will result in the loss of the right to make liability or warranty claims or any specially agreed rights to make guarantee claims.

2 System requirements



NOTE

Different rights levels for LSM and VNHost server

If the VNHost accesses the LSM database, LSM might be disrupted during execution and may not work with the database under certain circumstances.

- Always run LSM as an administrator.

IMPORTANT

SimonsVoss does not support Windows RT

The program is not supported. Errors cannot be ruled out. SimonsVoss accepts no responsibility.

- Do not use LSM Mobile on Windows RT systems.

The following system prerequisites must be met as a minimum to ensure that the software is stable in its operation:

The tablet should have sufficient battery capacity since the SmartCD programming device is also powered by the tablet. The Windows user must have full write/read access on the PC.

Operating system	Windows 10 (32/64 bit)
CPU	2.66 GHz or faster (Intel, AMD)
Connections	At least 1 USB port (2.0 compatible) Alternatives: Integrate tablet/notebook into the network. You can export LSM Basic/Business directly to the tablet/notebook by enabling a directory on the tablet/notebook.
Free memory space	Memory space: around 1 GB (<i>about 1 GB during installation</i>) RAM: at least 2 GB
Display	At least 1024x768

LSM Mobile PC is also suitable for a passive locking system and can control SmartCD.MP.

**NOTE****SmartCD2.G2 coupling on the Smartphone**

It is not possible to use Bluetooth to communicate between SmartCD.G2 and a PC or laptop.

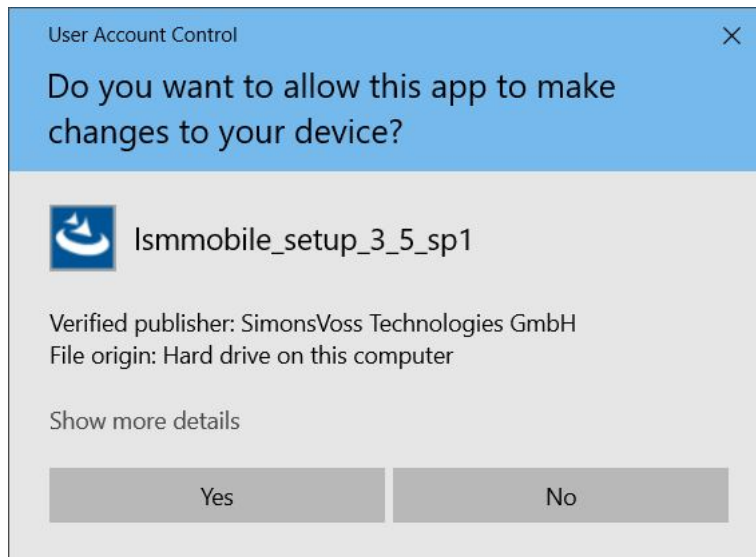
- If you are using the SmartCD2.G2 with a smartphone via Bluetooth, then unplug the connection cable from the SmartCD2.G2 to the PC/laptop again.
-

3 Intended use

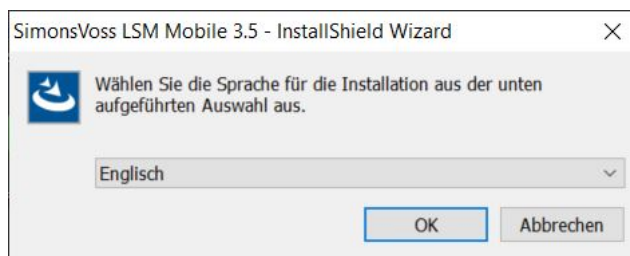
LSM Mobile is a compact solution in the LSM software and can be used for mobile applications, such as on a Windows tablet. The programming software enables locking devices in System 3060 to be programmed, read, opened in an emergency and set to a different time.

4 Installing LSM Mobile

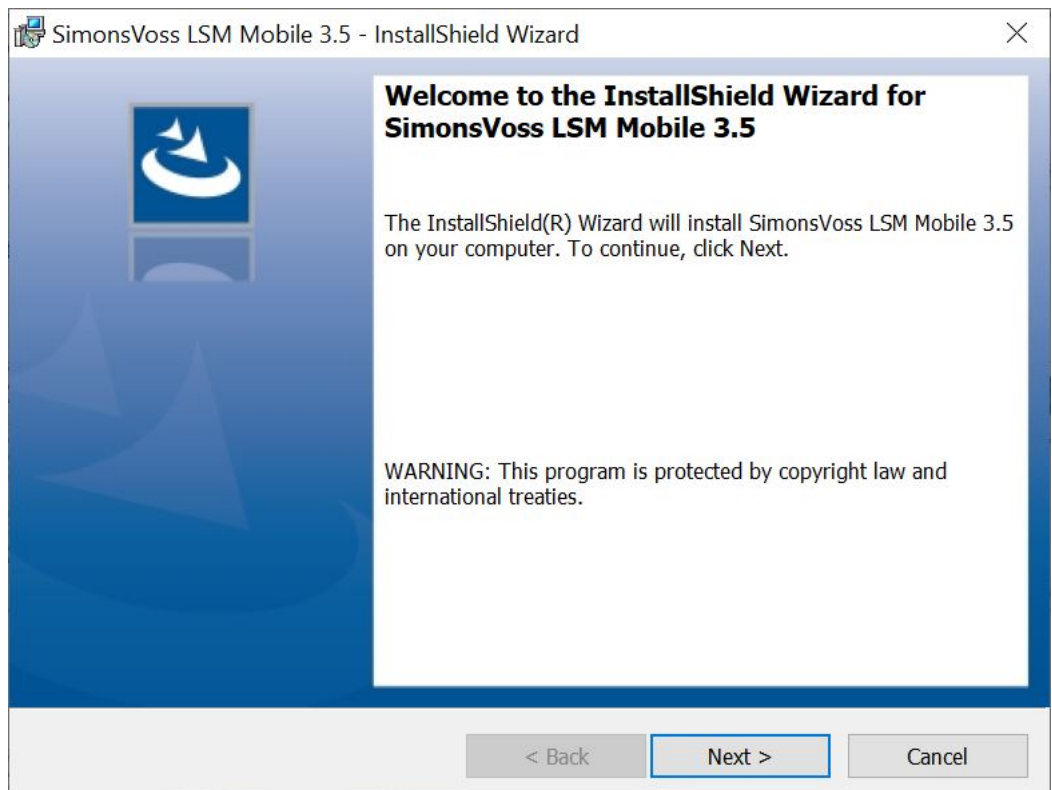
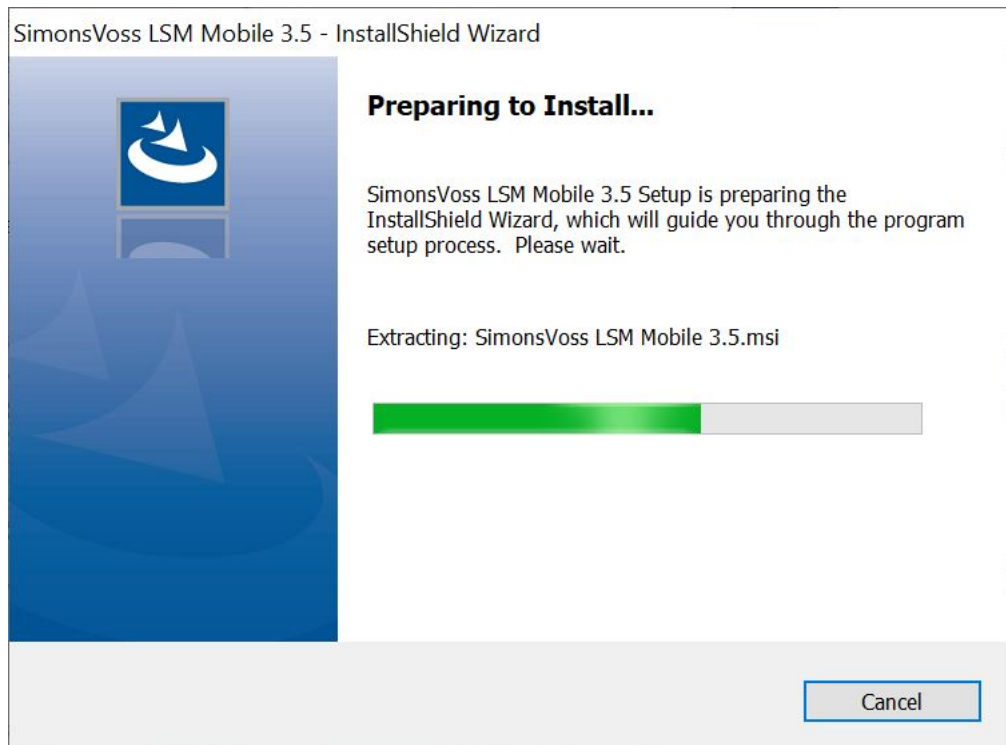
- ✓ System requirements for LSM Mobile met (see *System requirements* [▶ 5]).
- 1. Execute the set-up file.
 - ↳ The "User account control" window will open.



2. Click on the **Yes** button.
 - ↳ The InstallShield wizard will open.

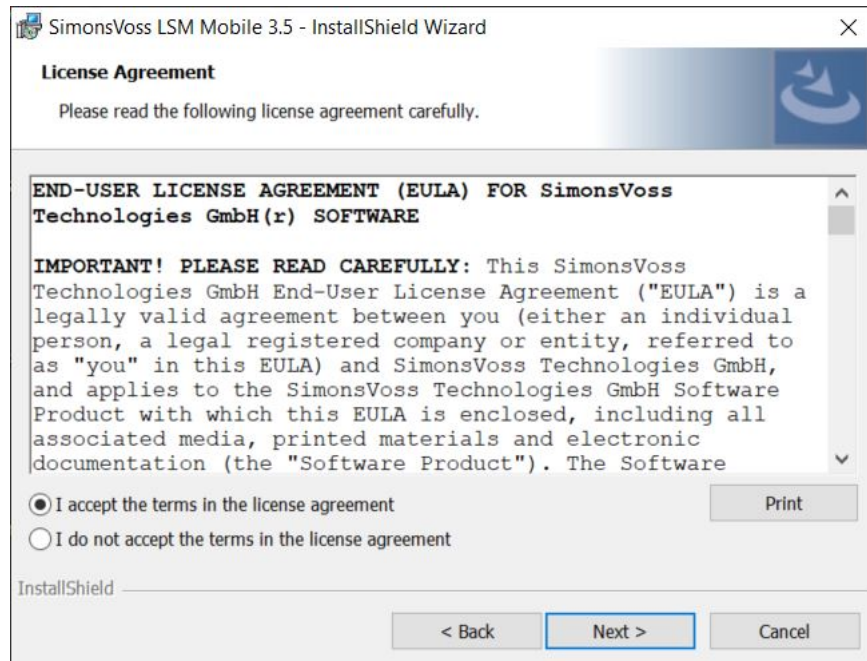


3. Select the language in which you wish to install LSM Mobile.
 - ↳ LSM Mobile set-up will open.



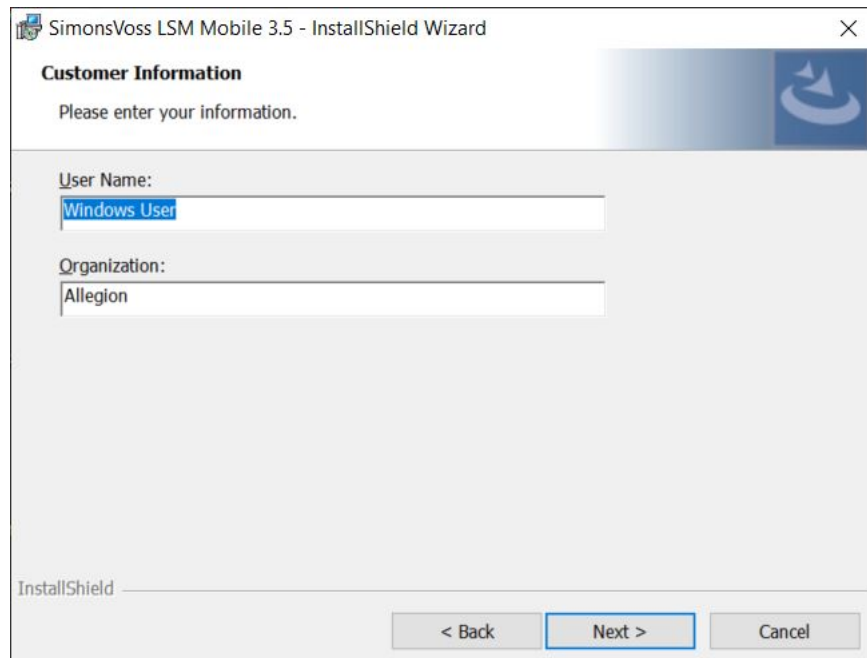
4. Click on the **Next** button.

5. Accept the EULA.



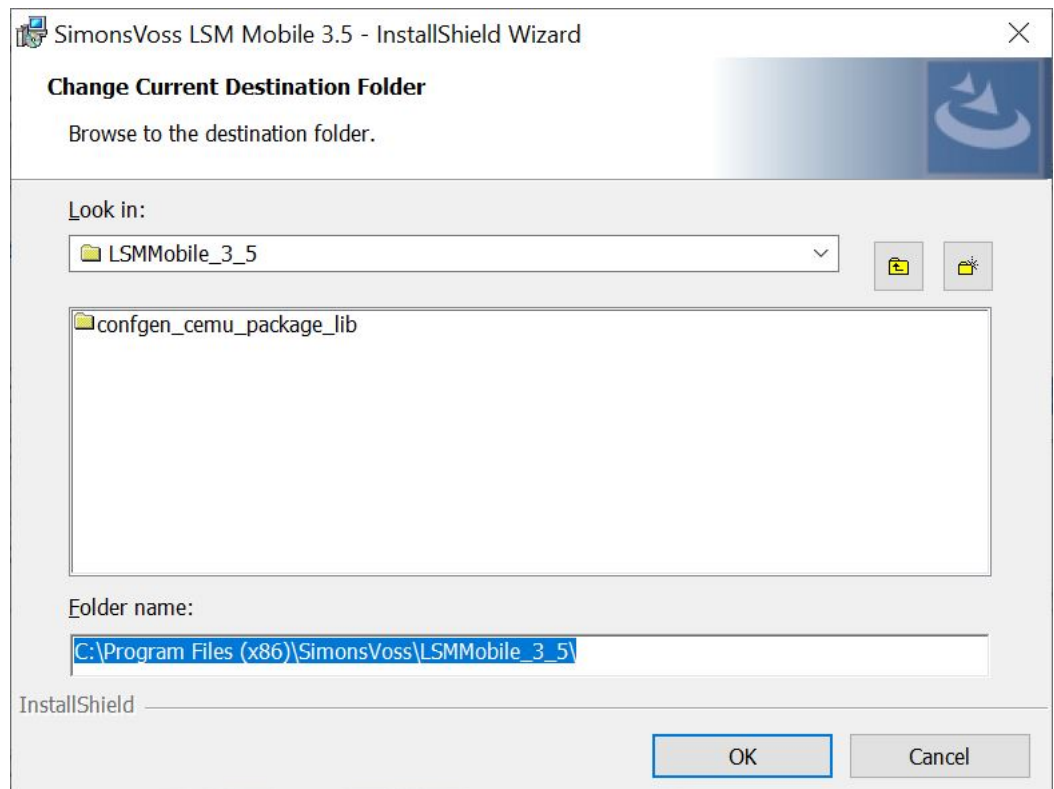
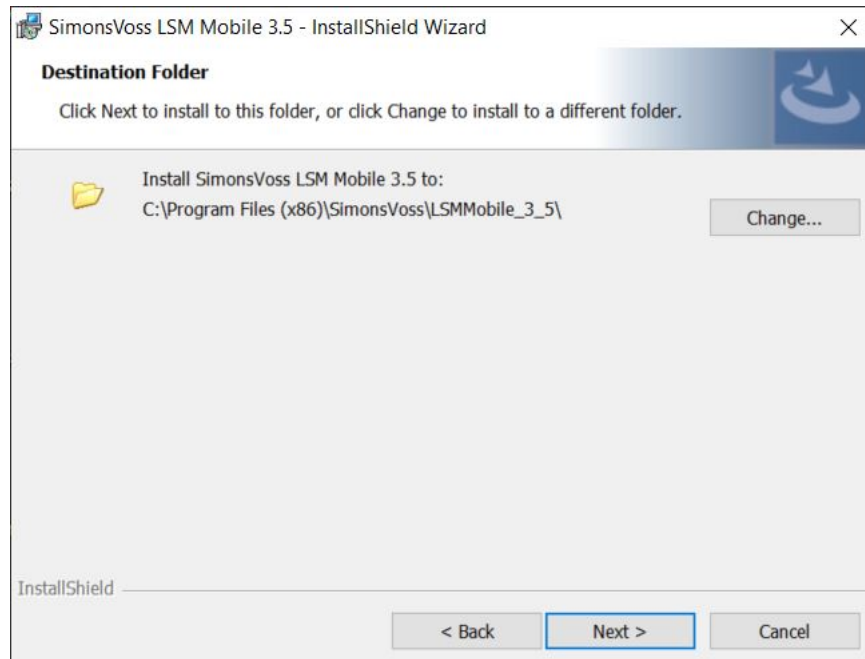
6. Click on the **Next** button.

7. Enter the Customer Information.



8. Click on the **Next** button.

9. Click on the **Change...** button to select the destination folder.



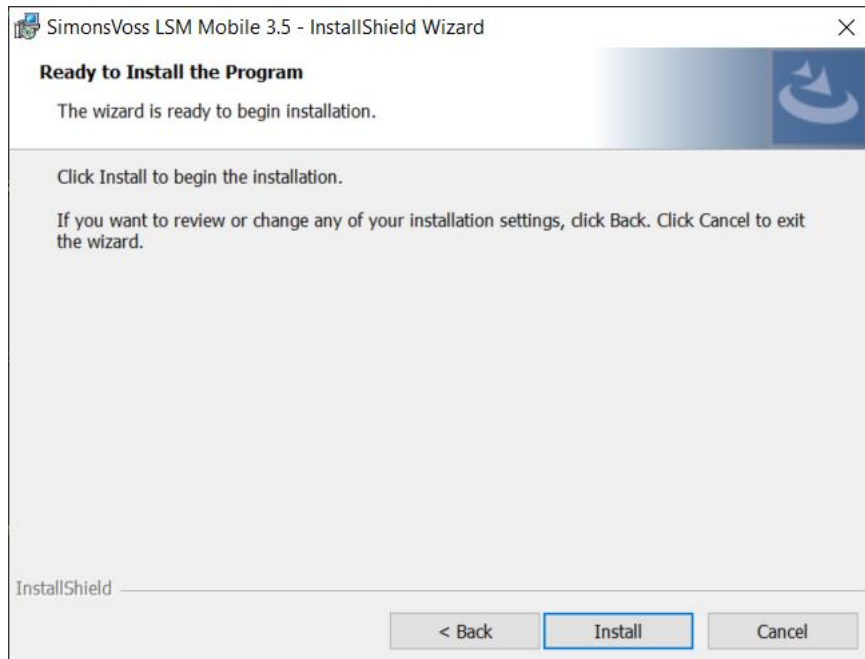
↳ The Explorer window will open.

10. Go to your output folder.

11. Click on the **OK** button.

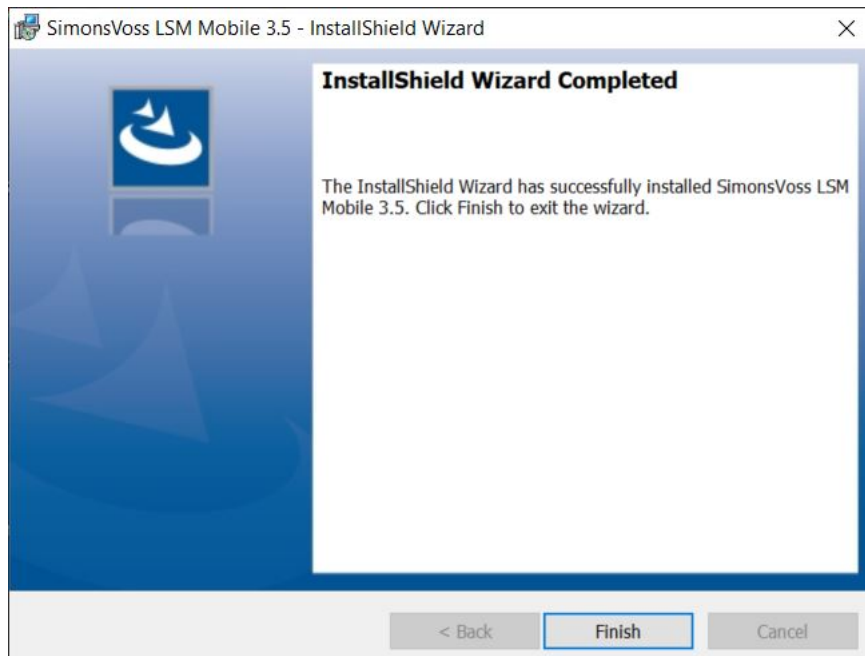
↳ Explorer window closes.

12. Click on the **Install** button.



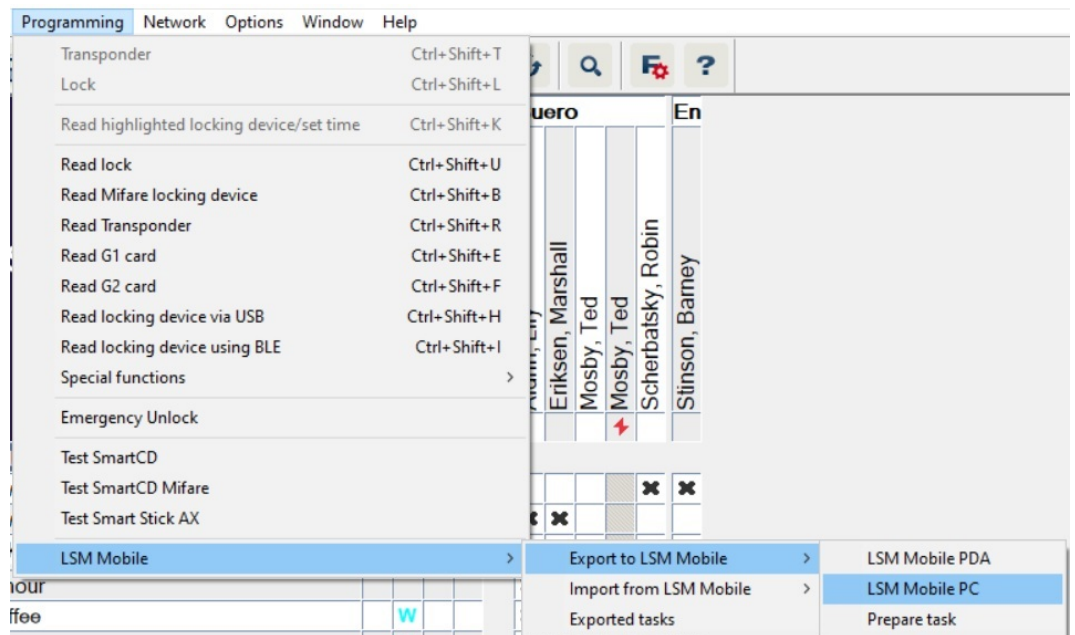
↳ Installation has started.

↳ Installation is complete. Press **Finish** to close.



5 Preparation: Exporting the database from LSM to LSM Mobile

- ✓ Locking system has been created correctly.
 - ✓ Locking device has been created correctly.
1. Open the locking system in LSM.
 2. Go to | Programming | in the top toolbar to select **LSM Mobile** → **Export to LSM Mobile** → **LSM Mobile PC**.



↳ The export screen will open.

Export to LSM Mobile: select locking systems

LSM Mobile user: Admin

Please select one or more locking systems in the list.

All locking systems

Apply filter:

Exchange folder: D:\LSM\Export LSM Mobile

< Zurück Weiter > Fertig stellen Cancel Hilfe

3. Select the user who is to work with LSM Mobile from the ▼ LSM Mobile user drop-down menu.
 - ↳ They will need to log onto LSM Mobile with their password at a later point.



NOTE

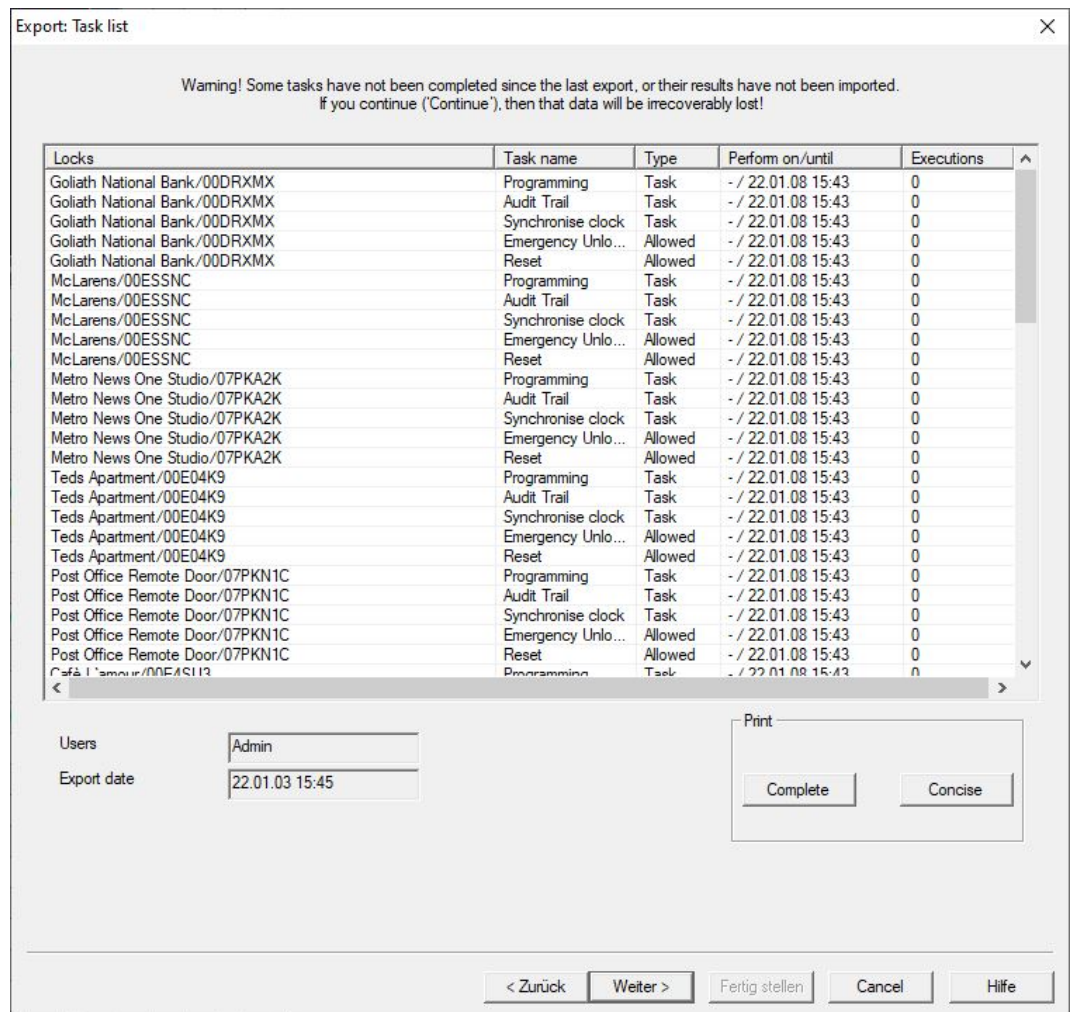
Tasks for LSM Mobile may only be exported for one user per database.

If another user is selected with LSM Mobile, any previously exported tasks are overwritten.

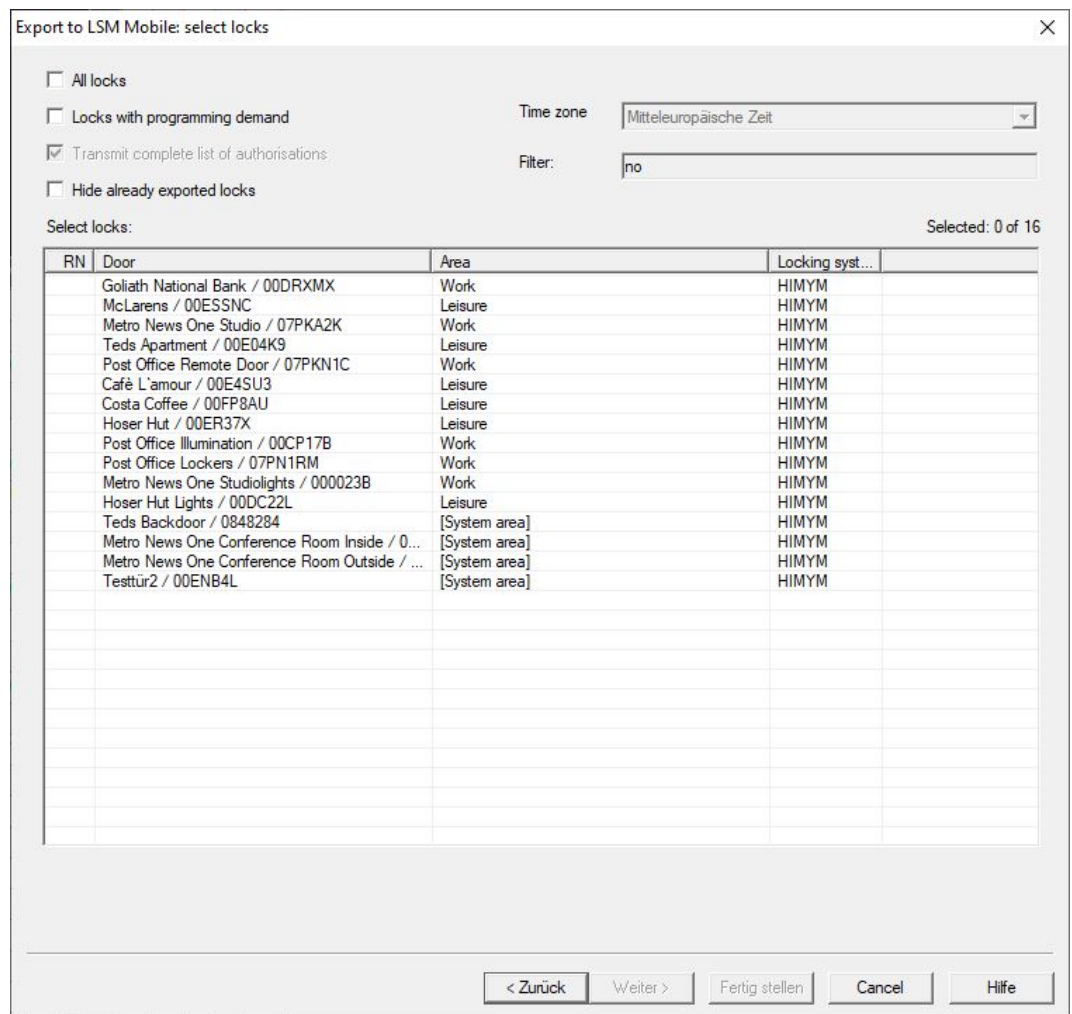
- Reimport the data before you select another user for LSM Mobile (see *Post-editing: Data reimport* [▶ 34]).

4. If you do not want to export all locking systems, deactivate the All locking systems checkbox and mark the desired locking systems.
5. Click on the button.
 - ↳ The Explorer window will open.
6. Select a folder you wish to use for the exchange.

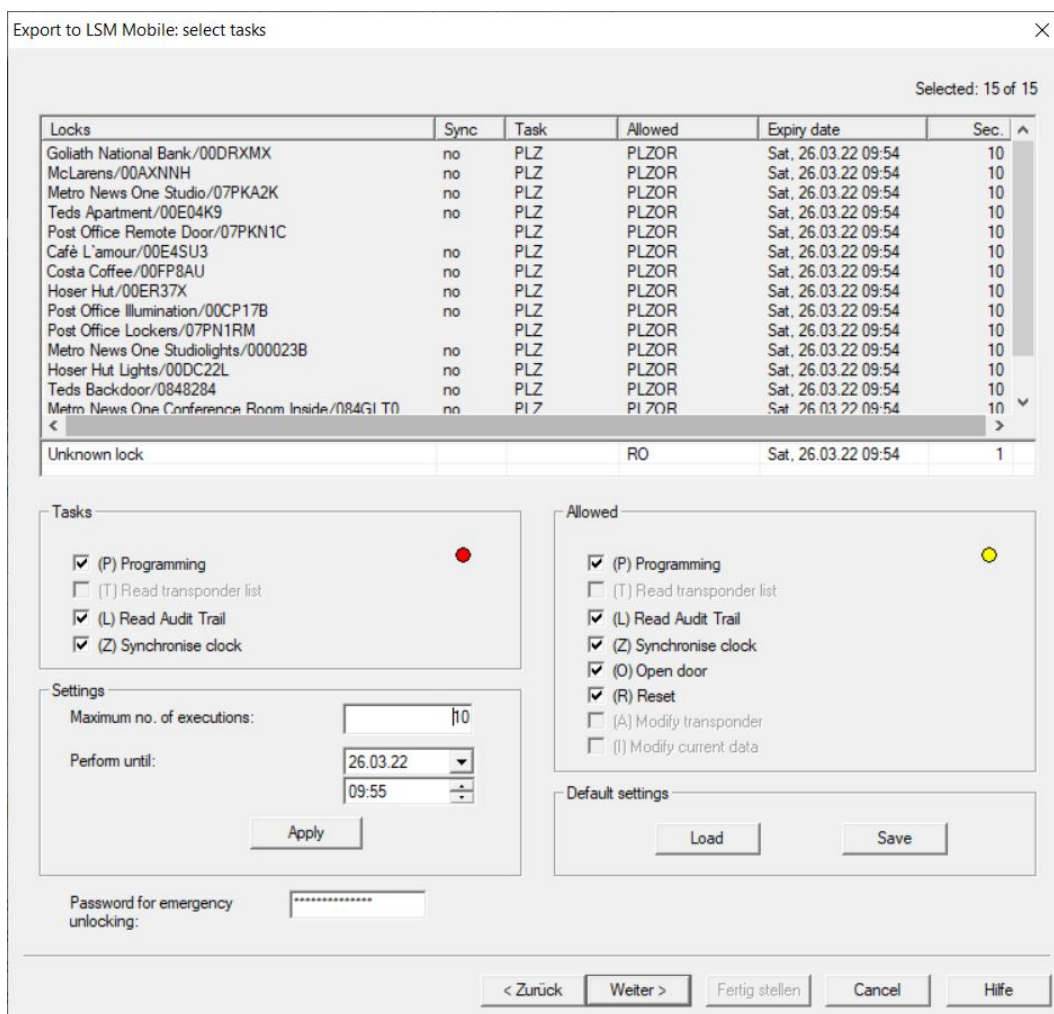
7. Click on the **OK** button.
 - ↳ Explorer window closes.
8. Users who are to work with LSM Mobile must be assigned to a suitable user group in LSM (feature: "HB – Use LSM Mobile").
9. Click on the **Continue** button.
 - ↳ The "Export: Task List" window will open.



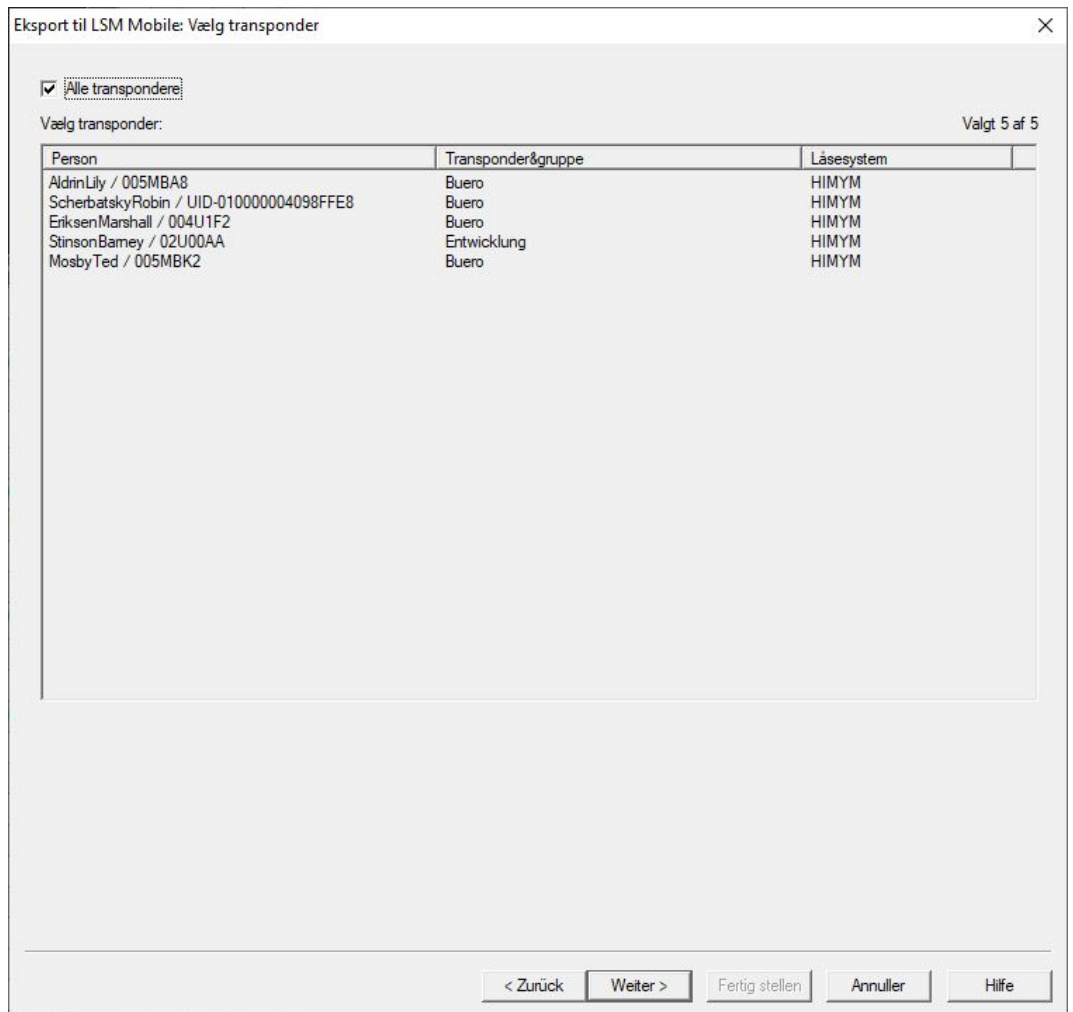
10. Click on the **Continue** button.
 - ↳ The "Export to LSM Mobile: Select locking devices" window will open.



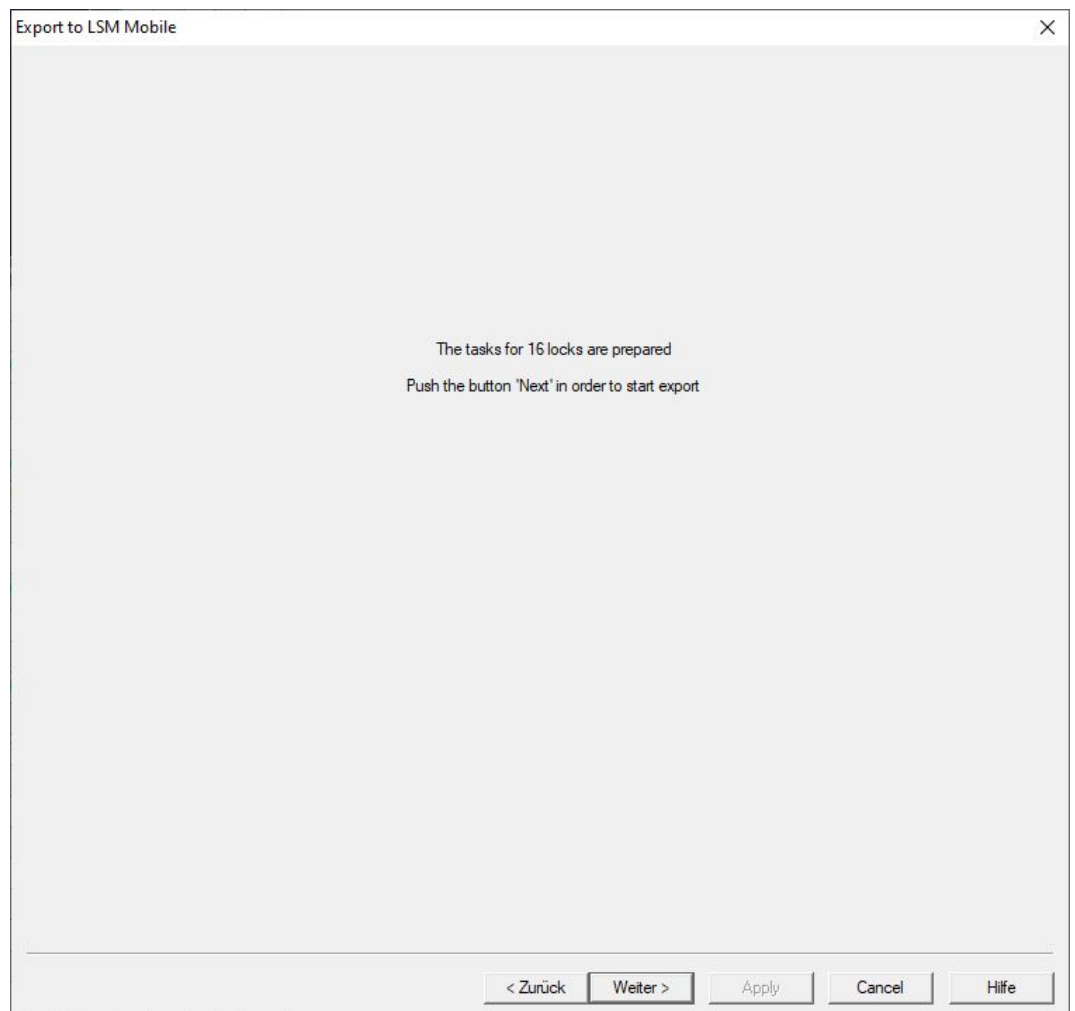
11. Select the locking devices (you can select more than one using Ctrl+mouse click and/or Shift+mouse click).
12. If all the locking devices or the locking devices with a programming requirement need to be exported, activate the All locks or Locks with programming demand checkboxes.
13. Click on the **Continue** button.
 - ↳ The "Export to LSM Mobile: Select Tasks" window will open.



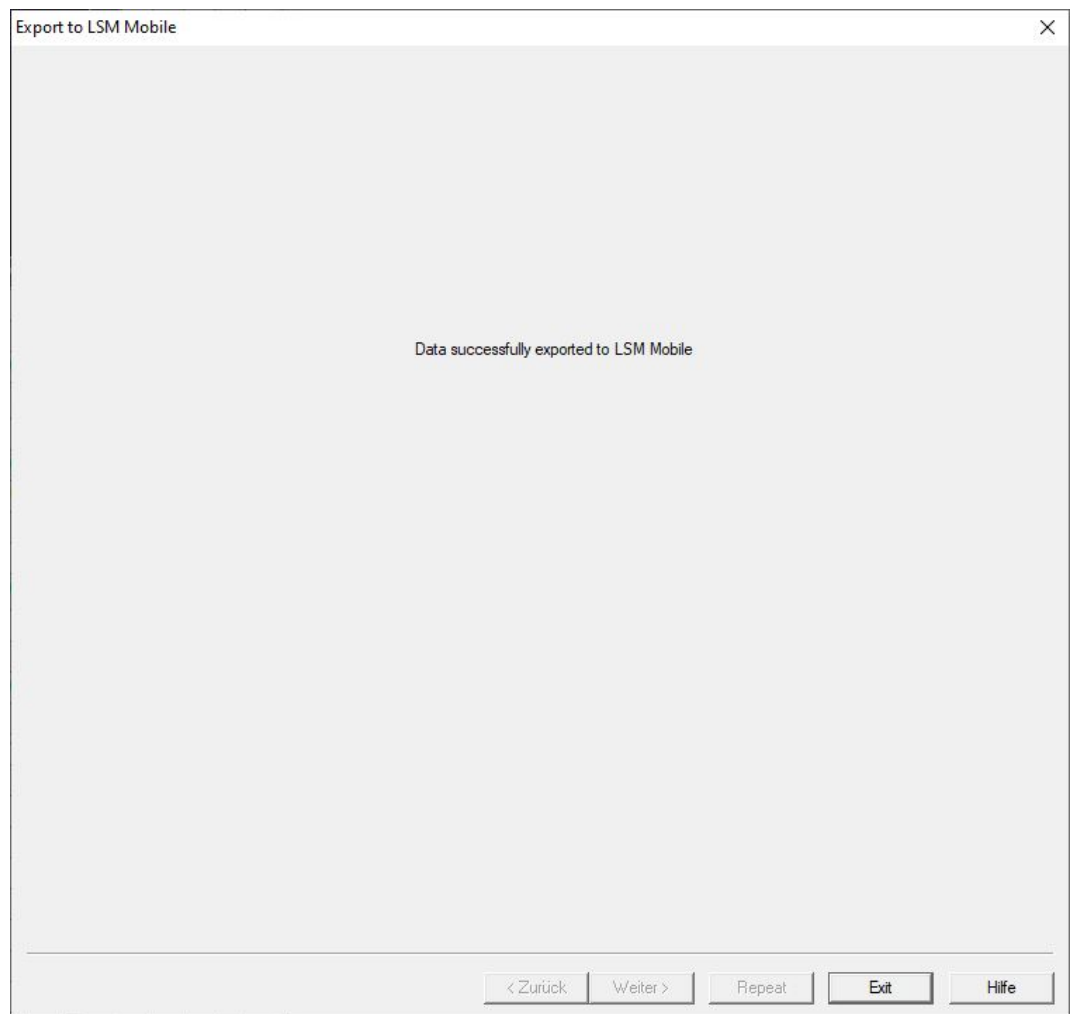
14. Select the locking devices which you wish to assign tasks to – you can select more than one device.
15. Tick the checkboxes to select the "Tasks" to be completed in LSM Mobile (see *Description of the settings* [▶ 38]).
16. Change the settings and click the **Apply** button.
17. Enter a Password for emergency unlocking in the input field.
18. Select which options can be implemented in LSM Mobile by ticking the checkboxes in the "Allowed" section.
19. You can save the "Settings" by pressing the **Save** button.
 - ↳ The default settings can be used again in the next process. To do this, click on the **Load** button.
20. Click on the **Continue** button.
 - ↳ The "Export to LSM Mobile: Select transponders" window will open.



21. If you do not wish to export programming tasks for all transponders, deactivate the All transponders checkbox and mark the transponders required (you can select more than one using Ctrl+click and/or Shift+click).



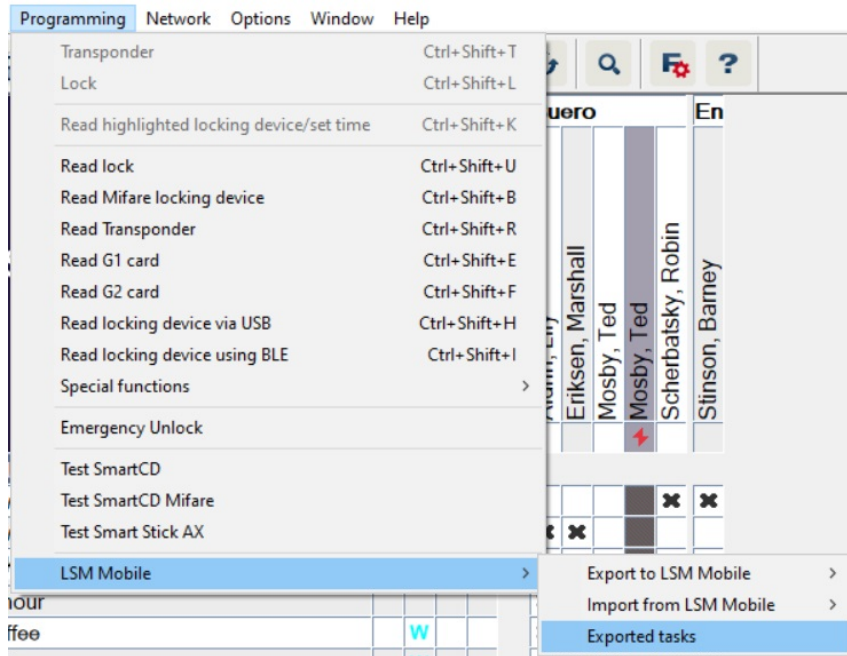
22. Click on the **Continue** button.
↳ Data are exported.



23. Click on the **Exit** button.

6 Exported tasks

- Go to | Programming | in the top toolbar to select **LSM Mobile** → **Exported tasks**.



- ↳ The "Exported tasks" window will open.
- ↳ All exported tasks are displayed with more detailed information.

Exported tasks

Select all Display tasks for all users

Export date	Sec.	From GUI user	Created	For PDA users	Executed	Imported	Database project
2022/03/14 10:09	77/45	Admin	2022/03/14 10:09	Admin	0/0	0/0	TestDB
2022/01/24 10:45	77/45	Admin	2022/01/24 10:45	Admin	0/0	0/0	TestDB
2022/01/21 13:59	77/45	Admin	2022/01/21 13:59	Admin	0/0	0/0	TestDB
2022/01/04 15:45	77/45	Admin	2022/01/04 15:45	Admin	0/0	0/0	TestDB
2022/01/04 15:07	77/45	Admin	2022/01/04 15:07	Admin	0/0	0/0	TestDB

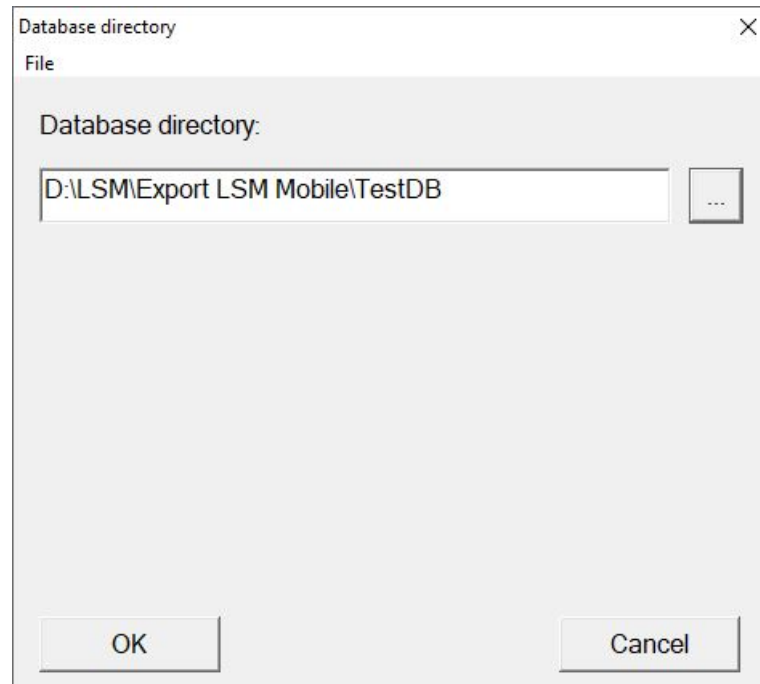
Lock	Task name	Type	Executi...	Executed	Perform until	State
Goliath National Bank/00D...	Synchronise clock	Task	0		2022/03/19 10:07	exported
Goliath National Bank/00D...	Read Audit Trail	Task	0		2022/03/19 10:07	exported
Goliath National Bank/00D...	Programming	Task	0		2022/03/19 10:07	exported
Goliath National Bank/00D...	Open door	Allowed	0		2022/03/19 10:07	exported
Goliath National Bank/00D...	Reset	Allowed	0		2022/03/19 10:07	exported
McLarens/00AXNNH	Reset	Allowed	0		2022/03/19 10:07	exported
McLarens/00AXNNH	Open door	Allowed	0		2022/03/19 10:07	exported
McLarens/00AXNNH	Programming	Task	0		2022/03/19 10:07	exported
McLarens/00AXNNH	Read Audit Trail	Task	0		2022/03/19 10:07	exported
McLarens/00AXNNH	Synchronise clock	Task	0		2022/03/19 10:07	exported
Metro News One Studio/07...	Reset	Allowed	0		2022/03/19 10:07	exported
Metro News One Studio/07...	Open door	Allowed	0		2022/03/19 10:07	exported
Metro News One Studio/07...	Programming	Task	0		2022/03/19 10:07	exported
Metro News One Studio/07...	Read Audit Trail	Task	0		2022/03/19 10:07	exported
Metro News One Studio/07...	Synchronise clock	Task	0		2022/03/19 10:07	exported
Teds Apartment/00E04K9	Reset	Allowed	0		2022/03/19 10:07	exported
Teds Apartment/00E04K9	Open door	Allowed	0		2022/03/19 10:07	exported
Teds Apartment/00E04K9	Programming	Task	0		2022/03/19 10:07	exported
Teds Apartment/00E04K9	Read Audit Trail	Task	0		2022/03/19 10:07	exported
Teds Apartment/00E04K9	Synchronise clock	Task	0		2022/03/19 10:07	exported
Post Office Remote Door/07...	Reset	Allowed	0		2022/03/19 10:07	exported
Post Office Remote Door/07...	Open door	Allowed	0		2022/03/19 10:07	exported
Post Office Remote Door/07...	Programming	Task	0		2022/03/19 10:07	exported

Remove Exit

7 Opening the database

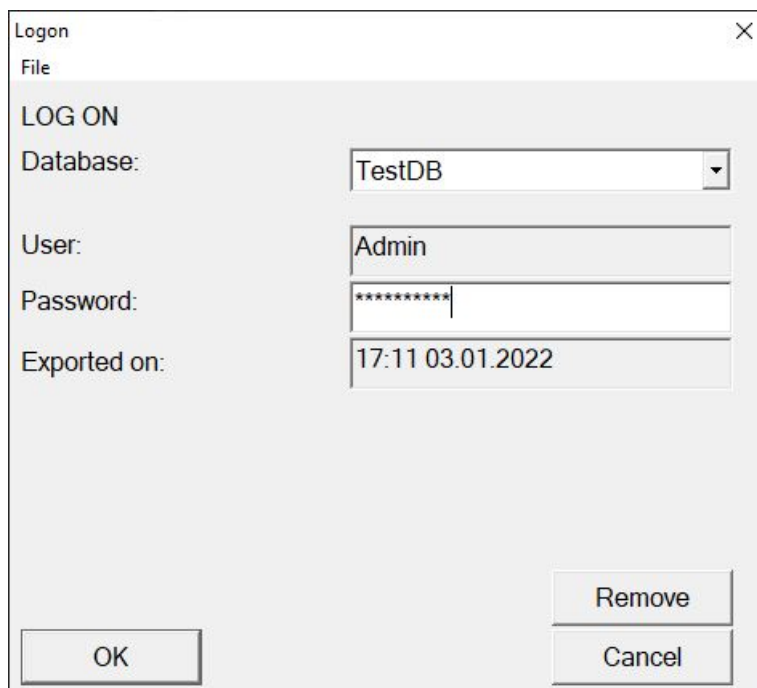
✓ The export was completed correctly (see *Preparation: Exporting the database from LSM to LSM Mobile* [▶ 13]).

1. Click on the **...** button to configure the folder with the exported data.

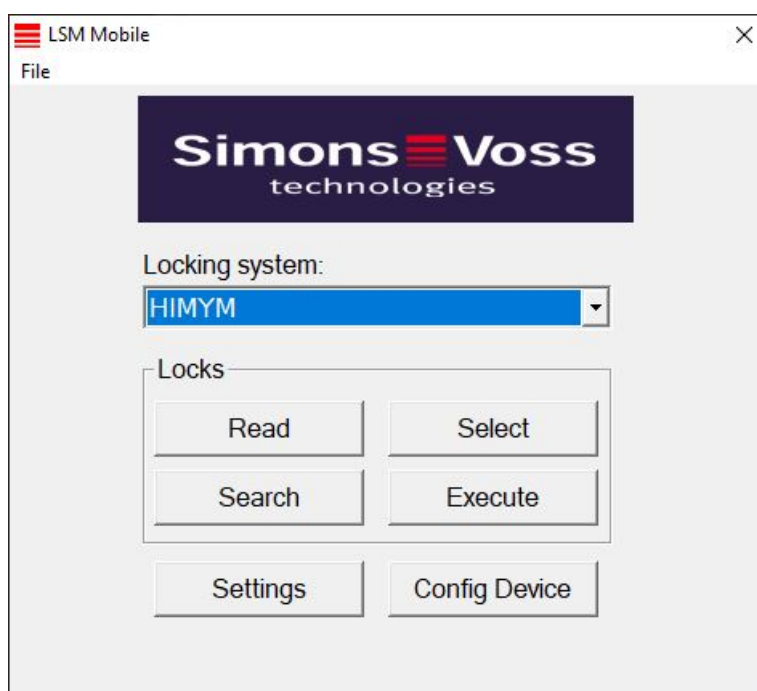


- ↳ The Explorer window will open.
2. Go to your output folder.
3. Click on the **OK** button.
 - ↳ Explorer window closes.

4. Select the required database from the ▼ Database drop-down menu.



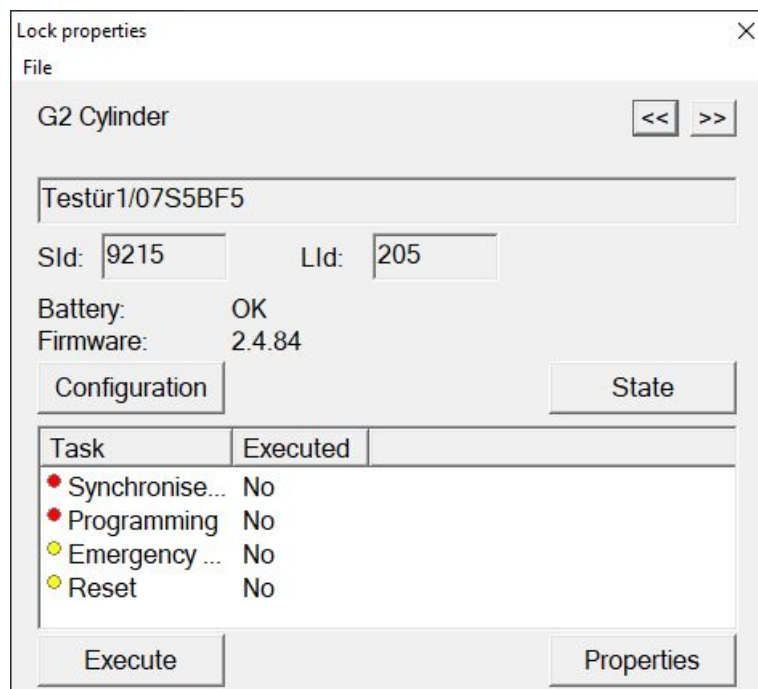
5. Enter the user password in the Password field.
6. Click on the **OK** button.
7. Select the locking system to be programmed from the ▼ locking system drop-down menu.



8 Carrying out work with LSM Mobile

8.1 Reading locking device

- ✓ Suitable programming device connected.
 - ✓ Suitable programming device configured in LSM Mobile (see *Replacing the programming device* [▶ 30]).
1. Hold the programming device next to the locking device you wish to read.
 2. Click on the **Read** button.
 - ↳ Locking device is read out.
 - ↳ The "Locking device properties" window will open.

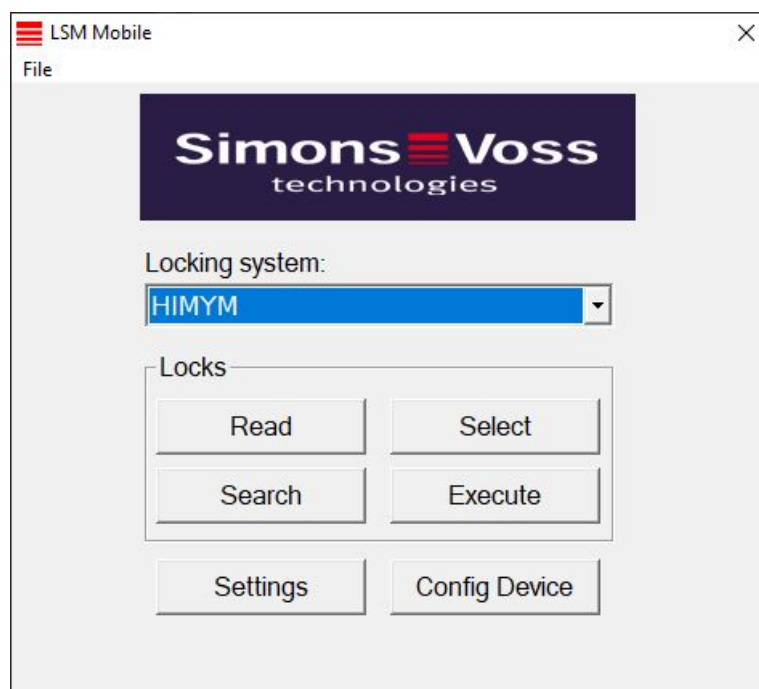


8.2 Programming the locking device

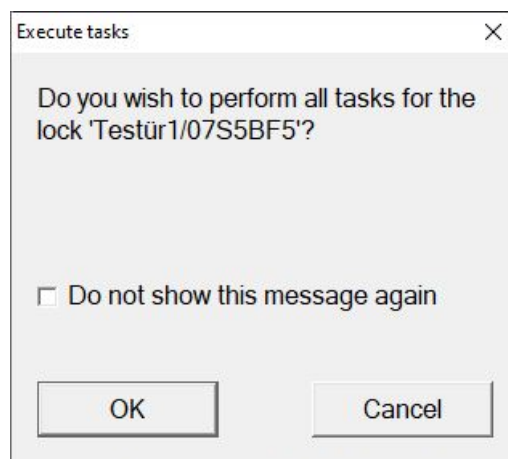
8.2.1 Programming the locking device next to the programming device

- ✓ Suitable programming device connected.
- ✓ Suitable programming device configured in LSM Mobile (see *Replacing the programming device* [▶ 30]).
- ✓ Locking device is already programmed.
- ✓ Locking device next to programming device.

1. Click on the **Execute** button.

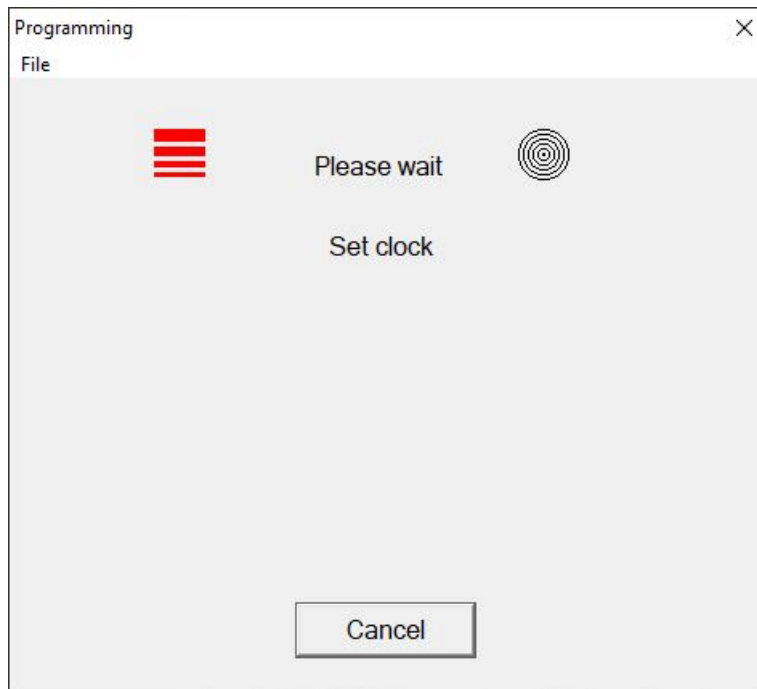


↳ Query about executing the tasks opens.

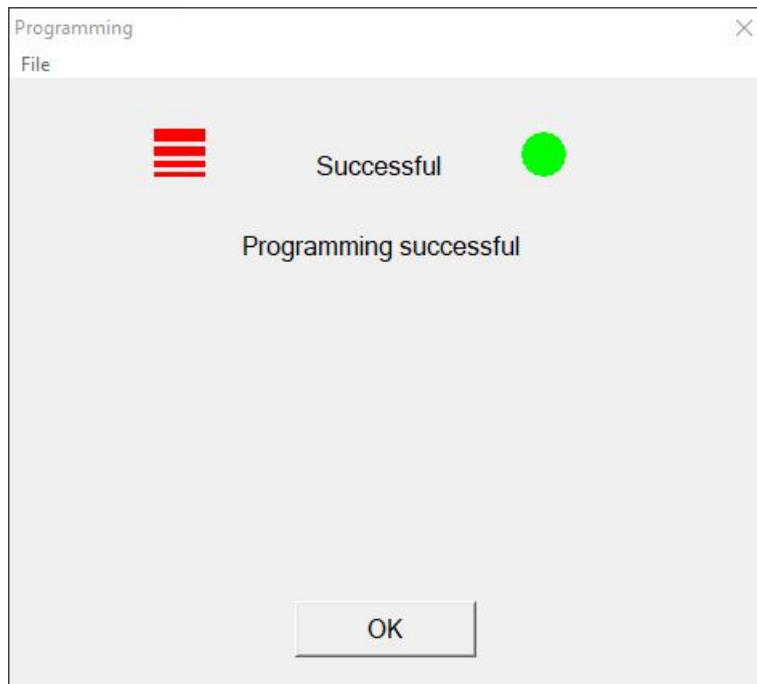


2. Click on the **OK** button.

↳ Programming starts.

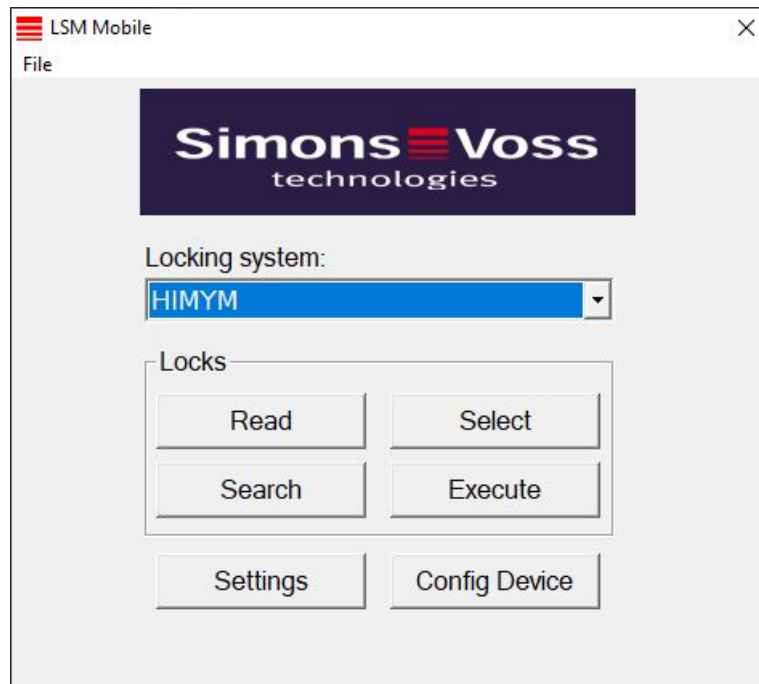


↳ Programming complete.

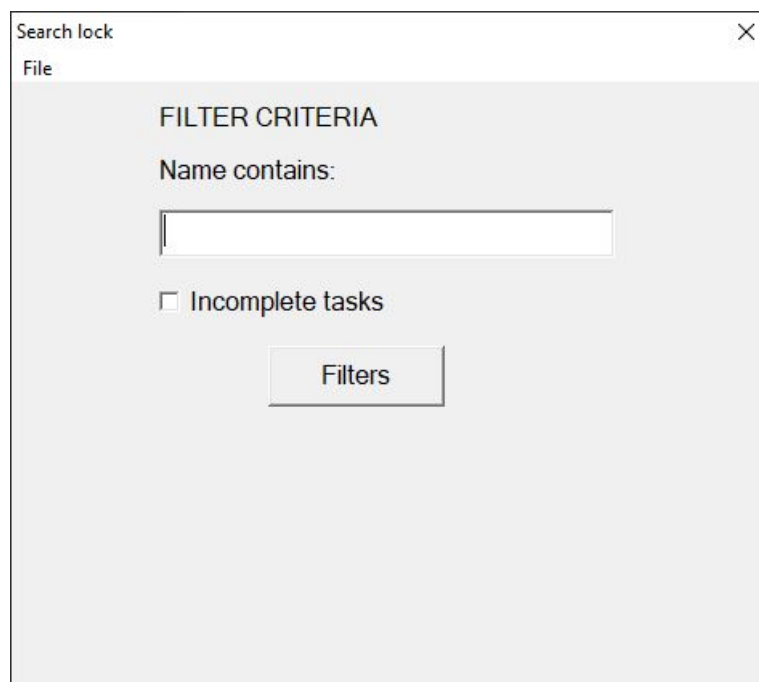


8.2.2 Programming a specific locking device

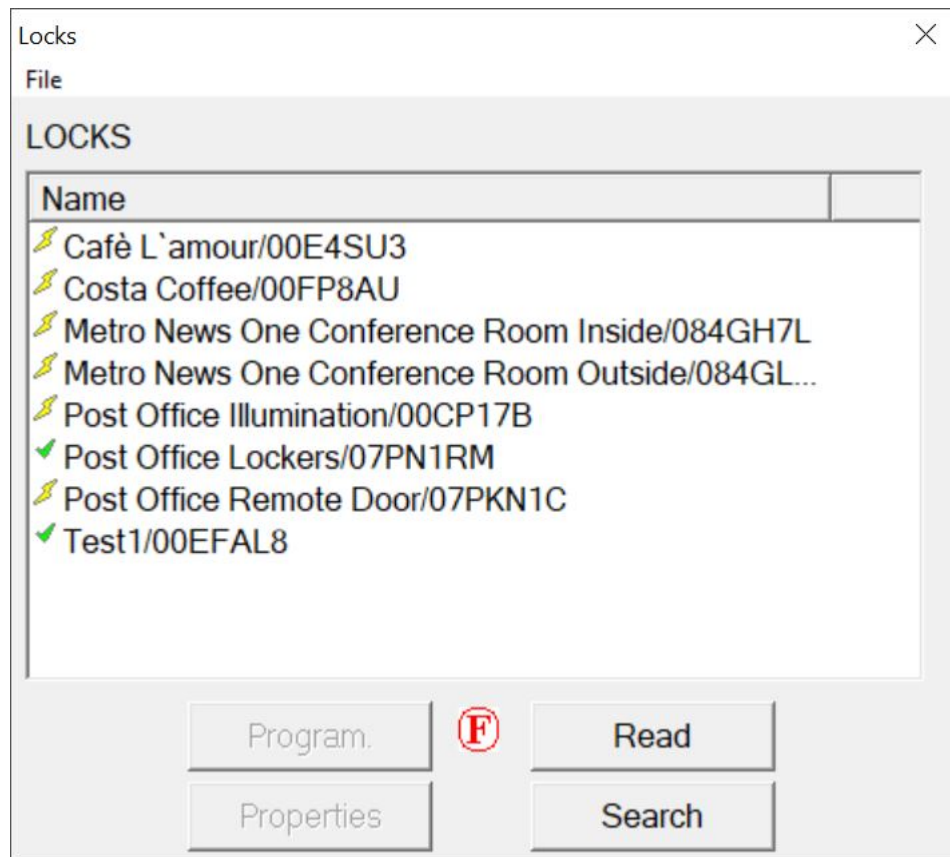
- ✓ Suitable programming device connected.
 - ✓ Suitable programming device configured in LSM Mobile (see *Replacing the programming device* [▶ 30]).
 - ✓ Locking device next to programming device.
1. Click on the **Select** button.



2. If you wish to filter the entries displayed: Click on the **Search** button and configure the filter.

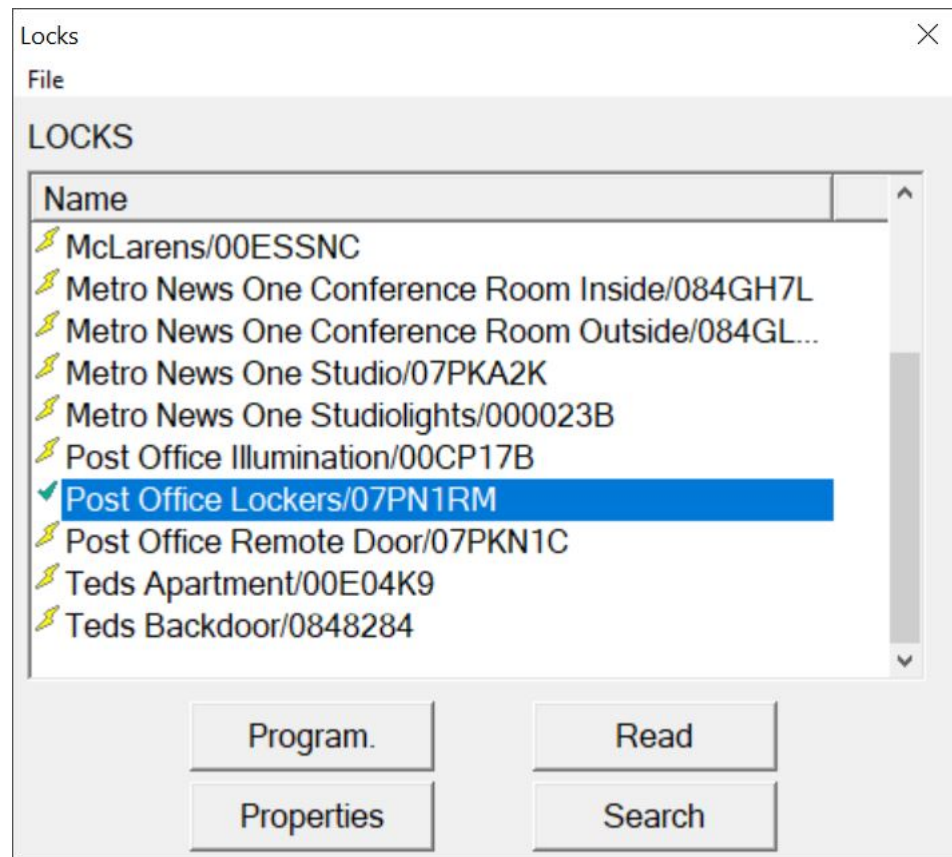


↳ A red F will appear to indicate when a filter is active.

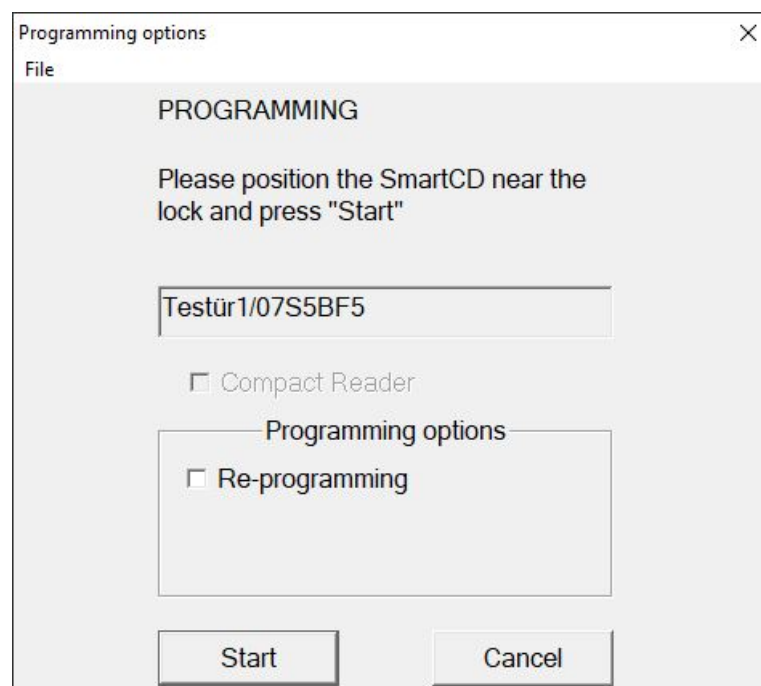


3. Select the locking device that you wish to programme.

4. Click on the **Program.** button.

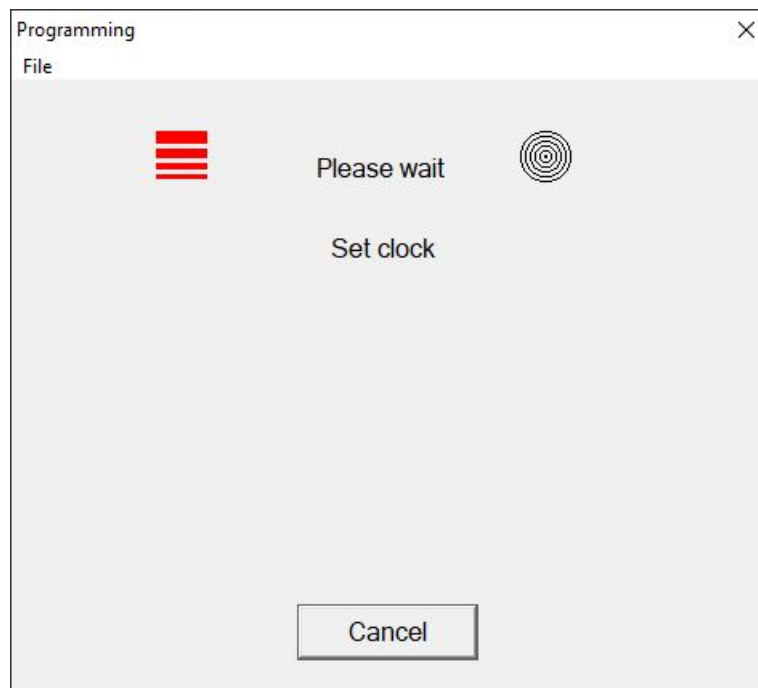


↳ The "Programming options" window will open.

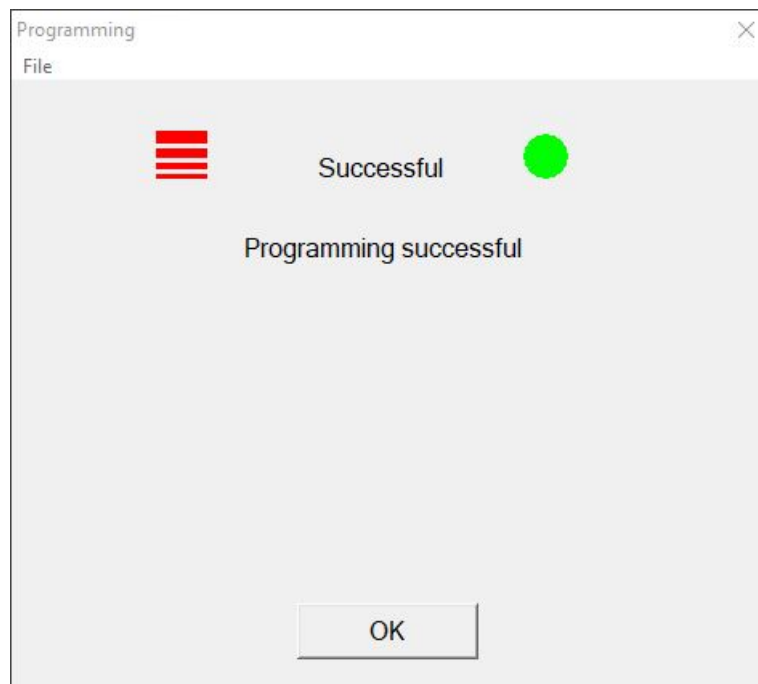


5. Click on the **Start** button.

↳ Programming process starts.



↳ Programming process complete.

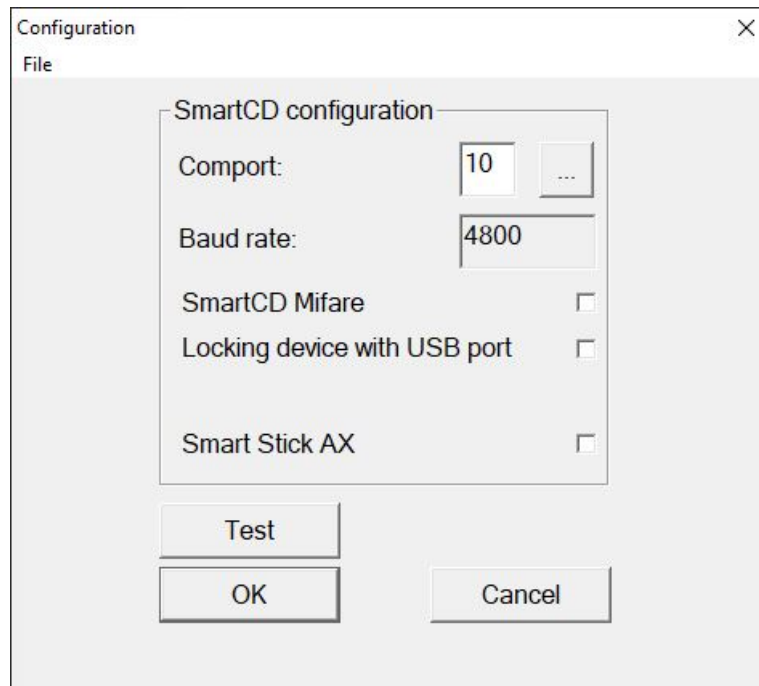


8.3 Replacing the programming device

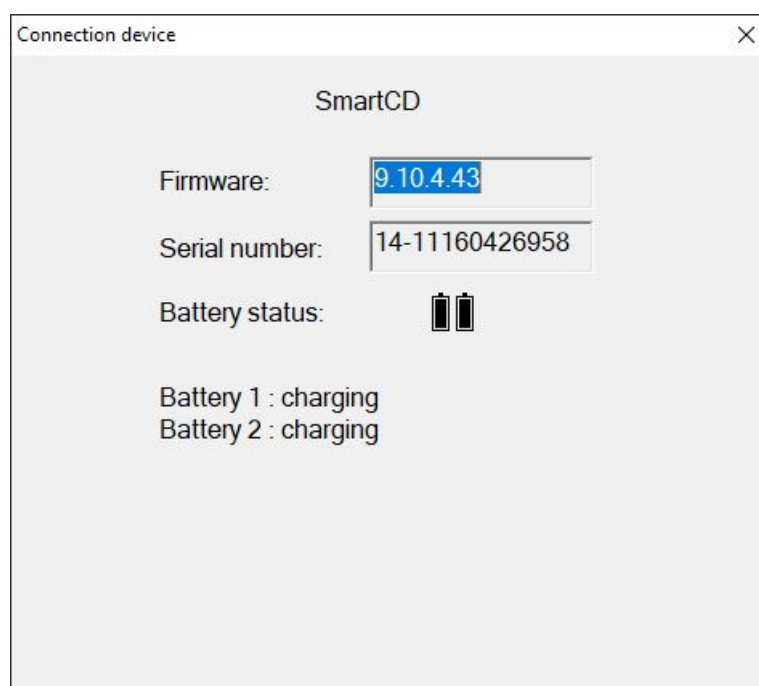
✓ Programming device to be used connected.

1. Click on the **Config Device** button.

↳ The "Configuration" window will open.



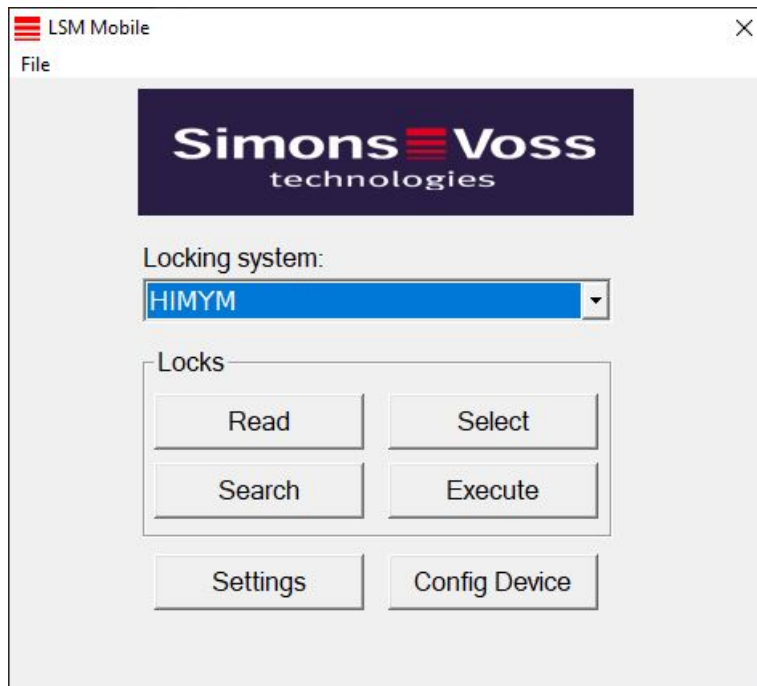
2. Use the checkboxes to activate the required programming device (SmartCD.G2/SmartCD2.G2 → all checkboxes deactivated, SmartRelay 3 → locking device with USB connection activated).
3. If you wish to use a SmartCD.G2/SmartCD2.G2, click on the **...** button.
 ↳ COM port is automatically recognized and entered.
4. Click on the **Test** button.
 ↳ The "Connection device" window will open and display information about the connected programming device.



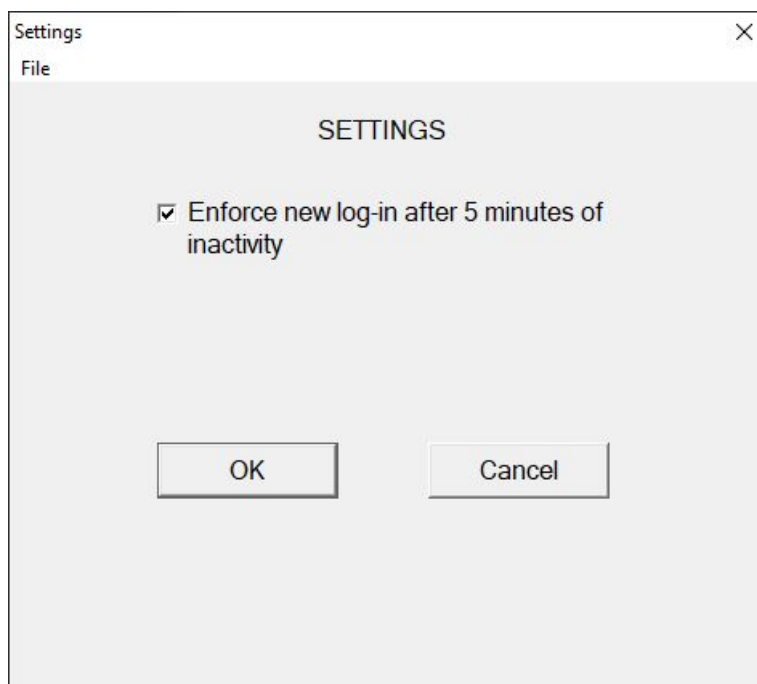
5. Press the ESC key.
 - ↳ "Connection device" window closes.
6. Click on the **OK** button.
 - ↳ "Configuration" window closes.

8.4 Staying logged on

1. Click on the **Settings** button.



- ↳ The "Settings" window will open.



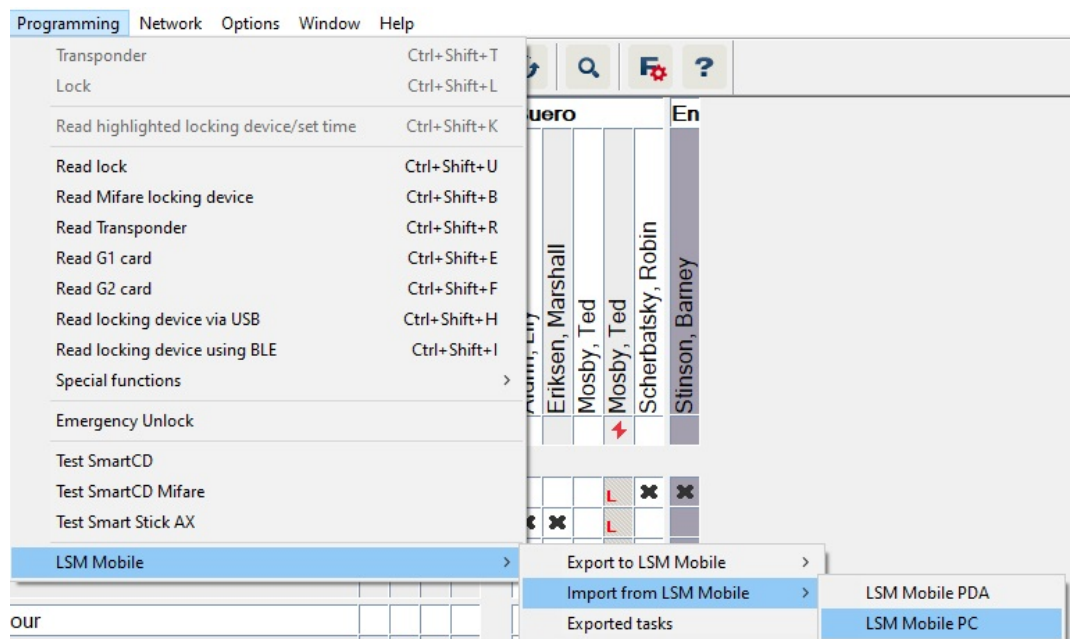
2. Activate the Force re-registration after 5 minutes of idling check box.
3. Click on the **OK** button.
 - ↳ "Settings" window closes.
 - ↳ Users are no longer logged out after five minutes of inactivity.

9 Post-editing: Data reimport

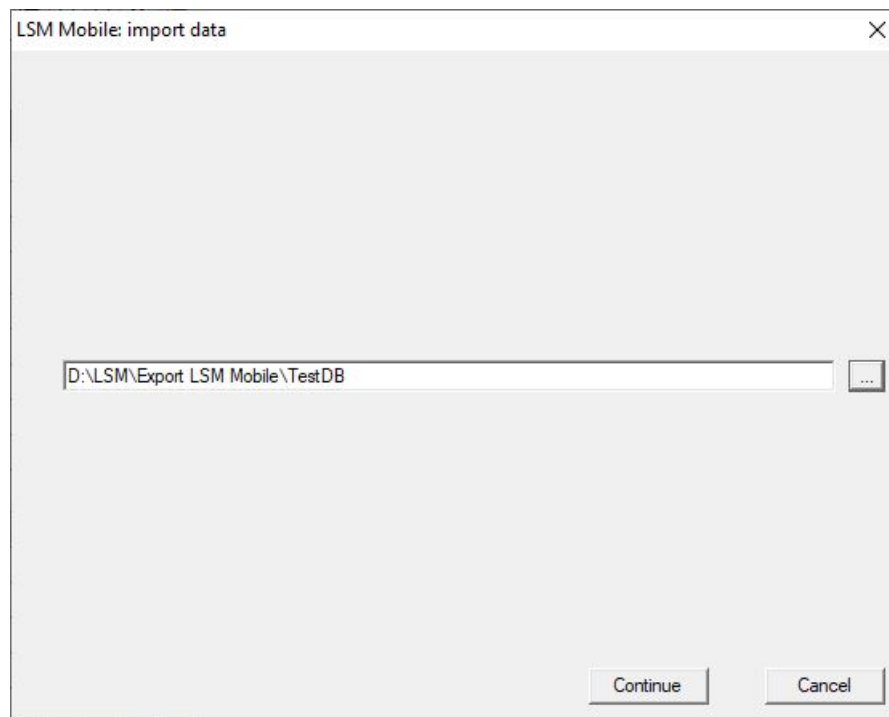
The status in the database does not match the actual status in the locking devices until the data has been reimported. You thus need to import the data back into LSM once you have completed all tasks in LSM Mobile.

- ✓ LSM open.
- ✓ Tasks completed in LSM Mobile.
- ✓ LSM Mobile not open.

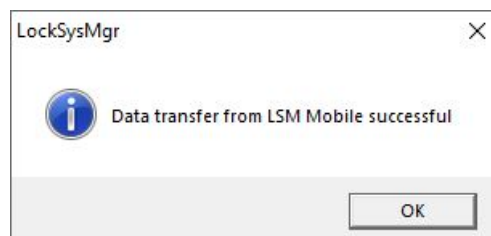
1. Select the **LSM Mobile** input → **Import from LSM Mobile** → **LSM Mobile PC** from the top | Programming | toolbar.



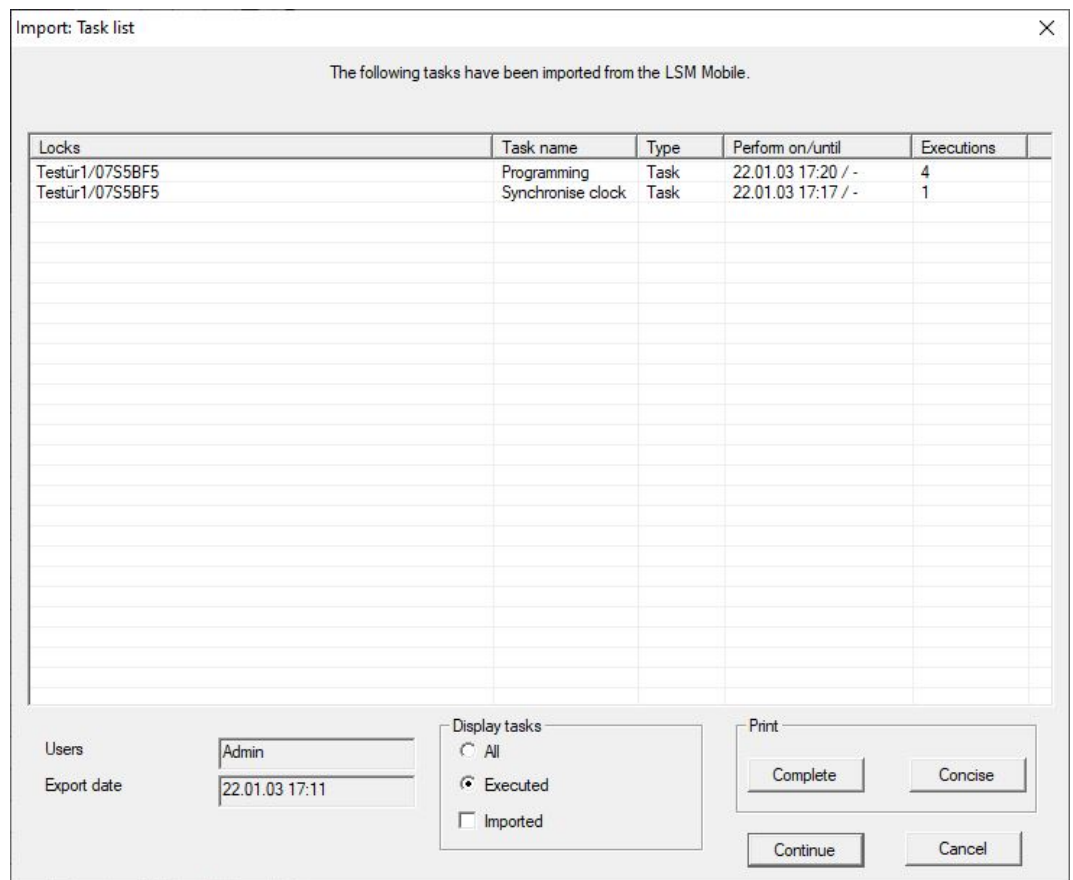
↳ The "LSM Mobile: Data import" window will open.



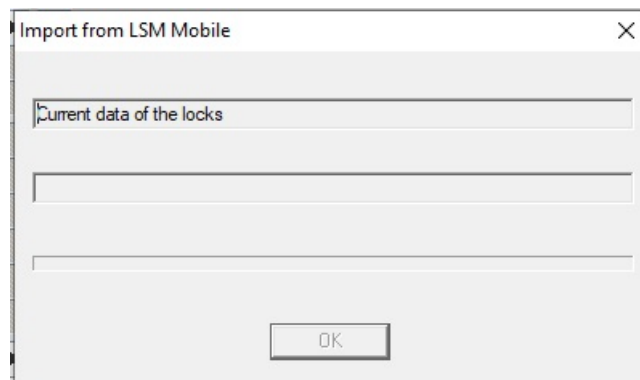
2. If the file path does not lead to the LSM Mobile data folder: Click the **...** button and navigate to the LSM Mobile data folder.
3. Click on the **Continue** button.
 - ↳ Data is imported into LSM.



4. Click on the **OK** button.
 - ↳ The "Import: Task List" window will open.



- Click on the **Continue** button.
 - ↳ "Import: Task List" window closes.
 - ↳ Data is synchronised with the LSM database.

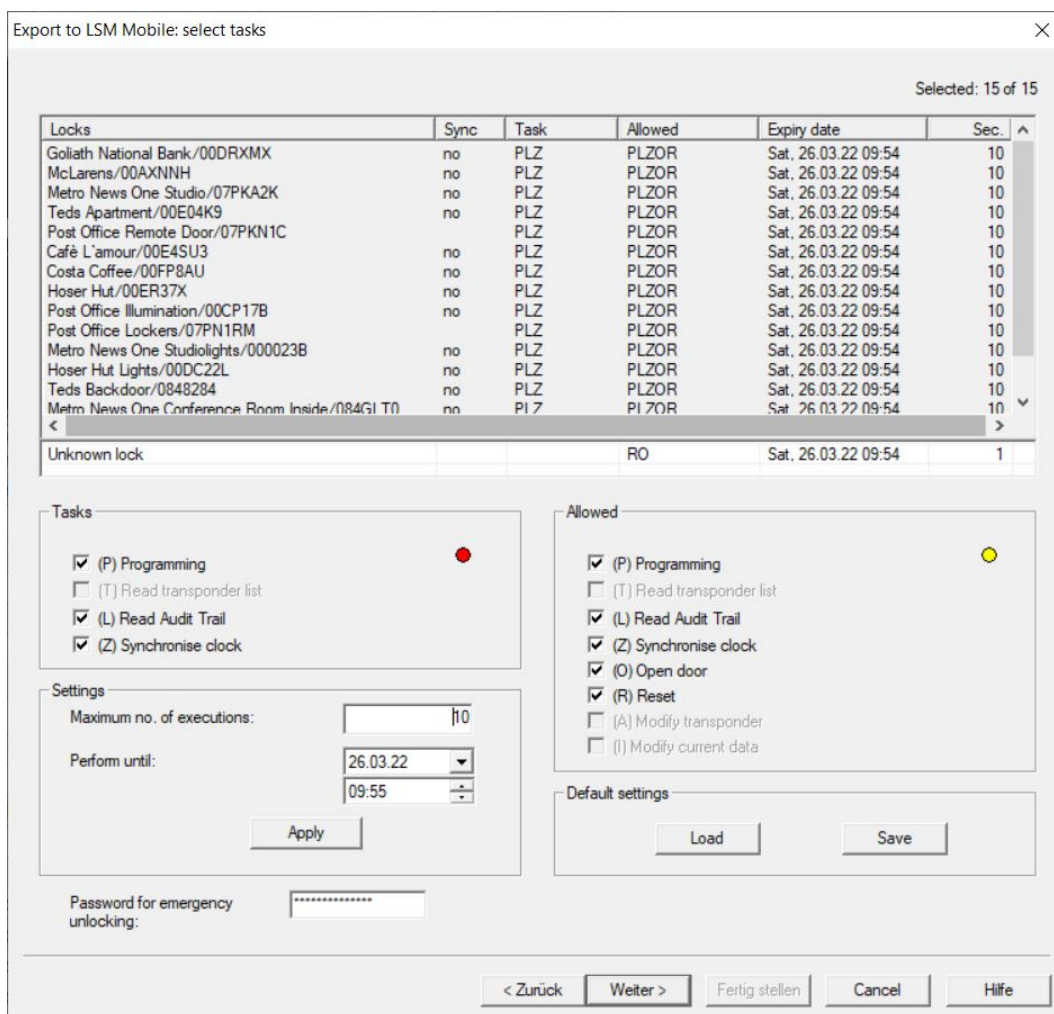


- ↳ Info window will open.



6. Click on the **OK** button.
 - ↳ Info window will close.
 - ↳ Programming requirement disappears in LSM.

10 Description of the settings



Tasks

The (P) Programming, (L) Lead Audit Trail and (Z) Synchronise clock checkboxes are located in the "Tasks" section.

Tasks	Meaning
<input checked="" type="checkbox"/> (P) Programming	Locking component programming in LSM Mobile.
<input checked="" type="checkbox"/> (L) Lead Audit Trail	Reading the access list
<input checked="" type="checkbox"/> (Z) Synchronise clock	Setting the locking system time and date.

Settings

You can use the "Tasks" section to specify the maximum number of transactions and the point in time for the end of their validity.

1. Enter the number of transactions.
2. Select the date and time until when the tasks can be performed.

Allowed

The "Allowed" section defines which steps LSM Mobile may perform for this programming cycle.

Allowed	Meaning
<input checked="" type="checkbox"/> (P) Programming	Programming transactions may be carried out.
<input checked="" type="checkbox"/> (L) Lead Audit Trail	Access lists may be read and prepared for LSM.
<input checked="" type="checkbox"/> (Z) Synchronise clock	Time and date may be set.
<input checked="" type="checkbox"/> (O) Open door	Door may be opened.
<input checked="" type="checkbox"/> (R) Reset	Locking device may be reset.

Default settings

You can save the settings and load them again for the next export in the "Settings" sections.

Password for emergency opening

A newly defined password can be entered here which differs from the locking system password and can be transferred to the LSM Mobile user. It can now also carry out emergency openings if required. This is also subject to the restriction in the maximum number of transactions. The locking system password is not displayed to the programmer who uses LSM Mobile.

11 Help and other information

Information material/documents

You will find detailed information on operation and configuration and other documents on the website:

<https://www.simons-voss.com/en/documents.html>

Software and drivers

Software and drivers can be found on the website:

<https://www.simons-voss.com/en/service/software-downloads.html>

Technical support

Our technical support will be happy to help you (landline, costs depend on provider):

+49 (0) 89 / 99 228 333

Email

You may prefer to send us an email.

support-simonsvoss@allegion.com

FAQs

You will find information and help in the FAQ section:

<https://faq.simons-voss.com/otrs/public.pl>

Address

SimonsVoss Technologies GmbH
Feringastr. 4
D-85774 Unterfoehring
Germany

SimonsVoss Technologies GmbH, Feringastr. 4, D-85774 Unterfoehring,
Germany