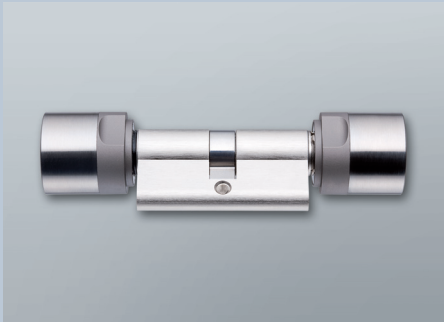


EURO PROFILE

COMFORT CYLINDER 3061

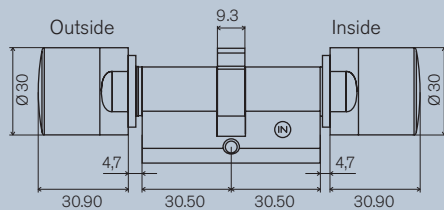


Digital locking cylinder 3061 – comfort

Digital locking cylinder with encapsulated electronic board for installation in doors compliant with DIN 18250, with Euro profile locks compliant with DIN 18251. It evaluates radio signals from transponders and decides whether access is authorised.

PRODUCT VERSION:

- Stainless steel finish
- Side with no electronics can be operated without transponder
- Brass version (.MS)
- Version with audit trail and time zone management (.ZK)
- Weather-proof version (.WP)
- Version „network inside“ with integrated Lock Node (.WN)
- G2 locking cylinder with advanced functionality refer to G2 locking systems



Dimensions in mm

TECHNICAL SPECIFICATIONS:

- Standard Euro profile cylinder compliant with DIN 18252/EN1303
- Knob diameter: 30 mm (1.18 inches)
- Basic construction length: 30–30 mm (1.18-1.38 inches) (outside/inside)
- Total length: up to max. 140 mm (5.51 inches) or max. 90 mm (3.54 inches) on one side, larger dimensions on demand
- Protection class: IP 54, version .WP (electronic knob): IP 65
- Battery type: 2 x lithium CR2450 3V
- Battery lifespan: up to 300,000 operations or up to ten years standby
- Temperature range: operation $-20\text{ }^{\circ}\text{C}$ to $+50\text{ }^{\circ}\text{C}$, storage $-35\text{ }^{\circ}\text{C}$ to $+50\text{ }^{\circ}\text{C}$
- 3,000 operations can be recorded
- 5+1 time zone groups (G2: 100)
- Up to 8,000 transponders can be managed per cylinder (G2: 64,000)
- Up to 48,000 lockings can be managed per transponder (G2: 304,000)
- Various duration / opening modes (office function)
- Directly networkable with integrated Lock Node (network cap WN.LN.I) or over external Lock Node with additional door monitoring function
- Upgradeable firmware

ORDERING DETAILS:

Euro profile comfort cylinder	Z4.30-30.CO
Version with audit trail and time zone management	.ZK
Brass version	.MS
Weather-proof version	.WP
Version „network inside“ with integrated Lock Node	.WN
Construction length from 65 mm up to 80 mm total length	e.g. Z4.40-40.CO
Construction length from 85 mm up to 100 mm total length	e.g. Z4.40-55.CO
Construction length from 105 up to 140 mm total length	e.g. Z4.50-55.CO
Construction length up to 140 mm total length or over 90 mm on one side	on demand
G2 locking cylinder with advanced functionality refer to G2 locking systems	.G2