

DIGITAL CYLINDER 3061

ACCESSORIES



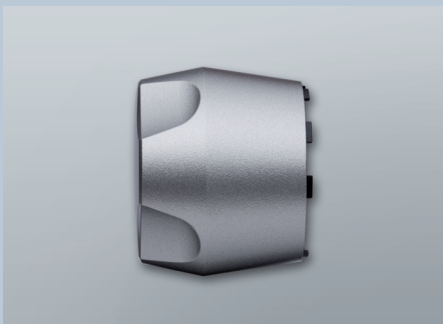
Knob for heavy duty doors (Z4.KNAUF2)



Shorter outer knob (Z4.KNAUF4)



Knob for heavy duty doors (Z4.KNAUF7)



Knob for heavy duty doors (Z4.KNAUF3)

ACCESSORIES:

Outer knob in TN3 design for non-electronic side, diameter 30 mm (1.18 inches), recessed grip, stainless steel finish, suitable for FD/BO.FD	Z4.KNAUF1
Outer knob for heavy duty doors for non-electronic side, diameter 42 mm (1.65 inches) recessed grip, stainless steel finish, suitable for FD/BO.FD	Z4.KNAUF2
Knob for electronic-side for heavy duty doors, diameter 35 mm (1.38 inches), with recessed grip, made of plastic, suitable for FD/BO.FD	Z4.KNAUF3
Knob for non-electronic side of the cylinder, 12 mm shorter, knob length approx. 21 mm (0.83 inches), suitable for FD/BO.FD	Z4.KNAUF4
Knob set brass matt version in TN4 design, diameter 30 mm (1.18 inches), with recessed grip (inner and outer side), suitable for FD/BO.FD	Z4.KNAUF5
Knob in TN4 design for non-electronic side of the cylinder, diameter 30 mm (1.18 inches) with recessed grip, stainless steel finish, suitable for FD/BO.FD	Z4.KNAUF6
Knob for electronic-side for heavy duty doors, diameter 35 mm (1.38 inches), with recessed grip, stainless steel finish, suitable for AP/HZ/SO/SR/BO.CO	Z4.KNAUF7
Conical knob set (inner and outer side), suitable only for FD	Z4.KNAUF8
Knob in TN4 design for electronic side of the cylinder, diameter 30 mm, with recessed grip, made of plastic	Z4.KNAUF9
Knob in TN4 design for non-electronic side of antipanic cylinders, with recessed grip, suitable for AP/AP.FD	Z4.KNAUF10
20 plastic distance discs for half cylinders multi-stage version	Z4.SCHEIBEN
Assembly/battery key for TN4 cylinders	Z4.SCHLUESSEL
Battery key set for TN3 double knob and half cylinders	BAT.KEY.SET
10 batteries for TN4 double knob and half cylinders, type: CR2450	Z4.BAT.SET
Battery set for TN3 locking cylinders: 5 x type: 1/2AA, 5 x type: CR1220	BAT.SET
1 battery for TN1 locking cylinders, type: 1/2 AA	111000
3 core protection adapters for TN4 double knob cylinders, length 8 mm (~ 0.31 inches)	Z4.KA.SET
3 core protection adapters for TN3 double knob cylinders, length 8, 11 and 14 mm (~ 0.31, 0.43 and 0.54 inches)	KA.SET
50 setscrews M1.5 for TN3 cylinders	D-914-3x3
50 setscrews M1.5 for TN1 cylinders	126300